

COPTER RNAV (GPS) 028°

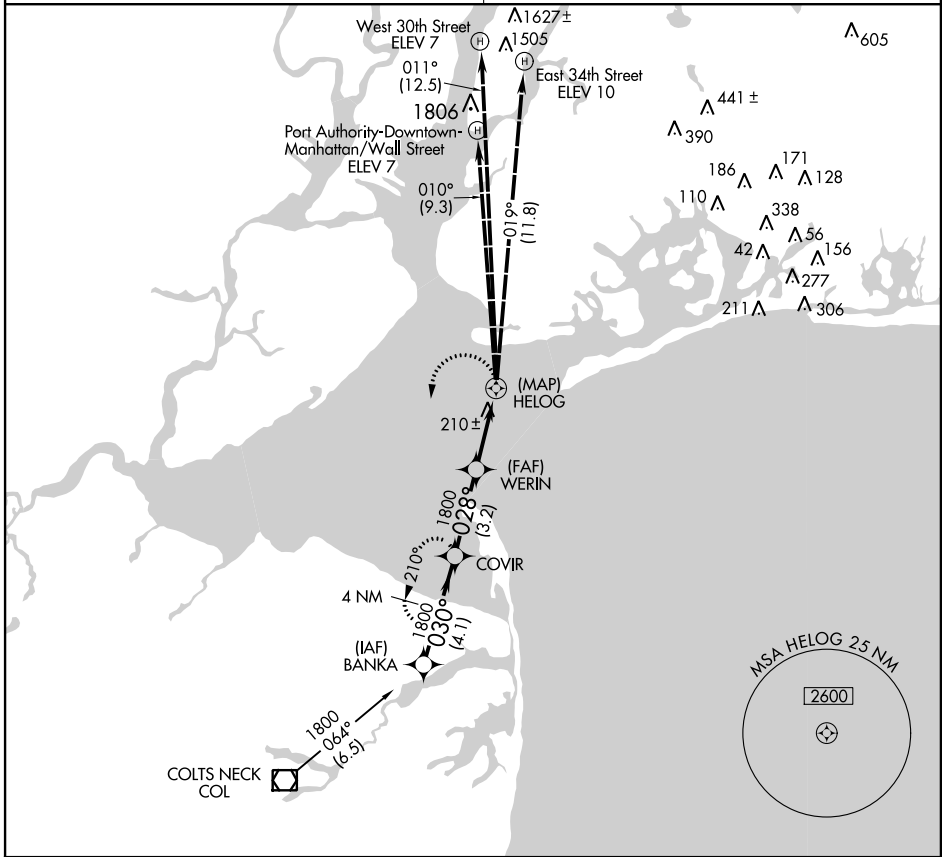
JOHN F. KENNEDY INTL (JFK)

APP CRS 028°	Rwy Idg TDZE Apt Elev	N/A N/A N/A
------------------------	-----------------------------	-------------------

▲ NA Proceed VFR from HELOG WP or conduct the specified missed approach. Limit final and missed approach airspeed to 70 KIAS. Use John F. Kennedy Intl altimeter setting.

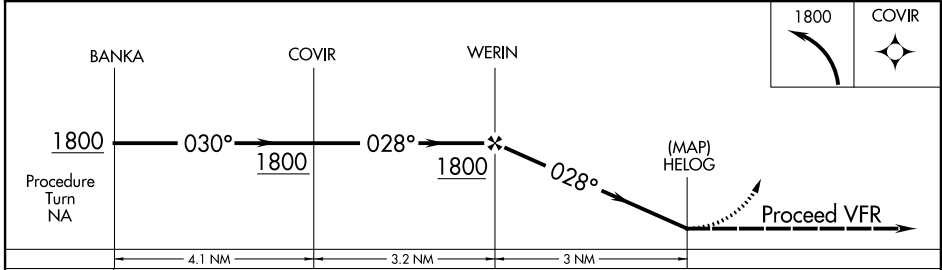
MISSED APPROACH: Climbing left turn to 1800 direct COVER WP and hold.

ATIS ARR-NE 128.725	ARR-SW 117.7	ARR-SW 115.4	NEW YORK APP CON 128.12 269.0
----------------------------------	------------------------	------------------------	---



NE-2, 26 JUN 2014 to 24 JUL 2014

NE-2, 26 JUN 2014 to 24 JUL 2014



CATEGORY	COPTER	
H-028°	500- ³ / ₄ 467 (500- ³ / ₄)	