

# GREK1 THREE DEPARTURE

SL-610 (FAA)

JOHN F. KENNEDY INTL (JFK)  
NEW YORK, NEW YORK

NE-2, 26 JUN 2014 to 24 JUL 2014

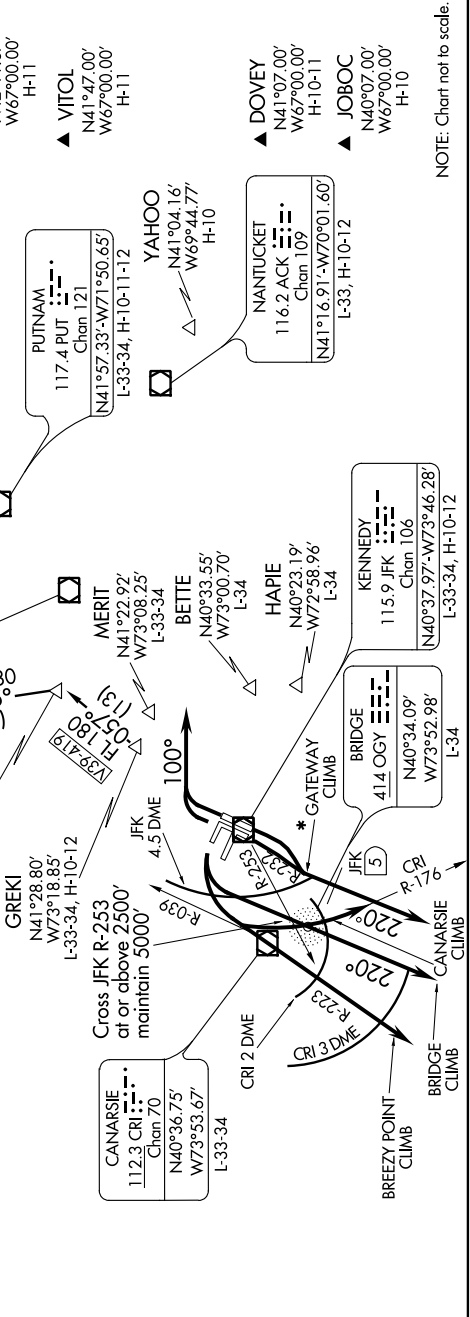
ATIS  
128.725  
CLNC DEL  
135.05 348.6  
NEW YORK DEP CON  
135.9 353.750

(NARRATIVE ON FOLLOWING PAGE)

### TAKEOFF MINIMUMS:

Rwys 4L, 4R, 13L, 22L, 22R: Standard.  
Rwy 13R: 300-2 or Standard with minimum  
climb 220' per mile to 300'.  
Rwys 31L, 31R: 1800-3 or Standard with  
minimum climb 240' per mile to 2400'.

\* NOTE: To be assigned during the period  
2200-0700 local.



NOTE: Chart not to scale.

# GREK1 THREE DEPARTURE

NE-2, 26 JUN 2014 to 24 JUL 2014