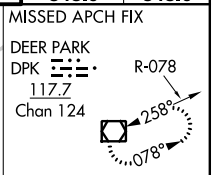
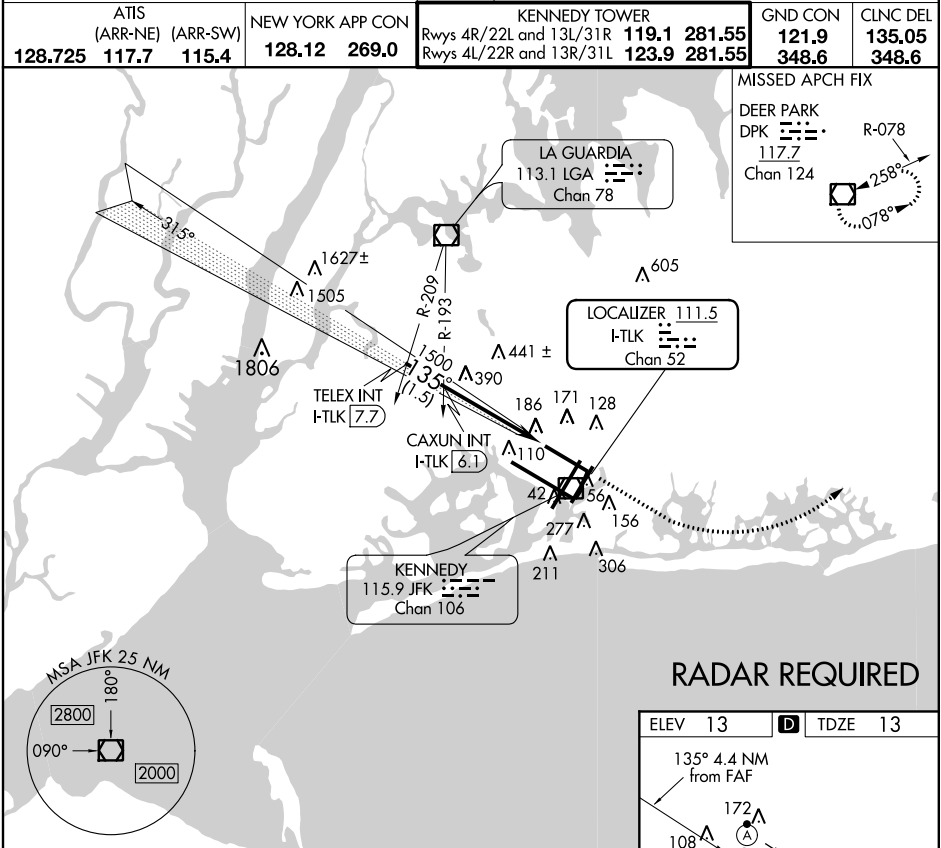


ILS or LOC RWY 13L

JOHN F. KENNEDY INTL (JFK)

LOC/DME F-TLK 111.5 Chan 52	APP CRS 135°	Rwy Idg 9095 TDZE 13 Apt Elev 13
--	------------------------	---

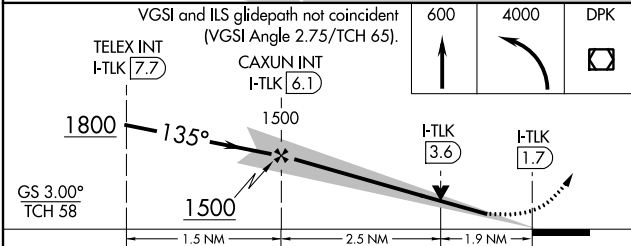
ALSF-2 	MISSED APPROACH: Climb to 600 then climbing left turn to 4000 direct to DPK VOR/DME and hold.				
	<table border="1"> <tr> <td>ATIS (ARR-NE) 128.725 (ARR-SW) 117.7 115.4</td> <td>NEW YORK APP CON 128.12 269.0</td> <td>KENNEDY TOWER Rwys 4R/22L and 13L/31R 119.1 281.55 Rwys 4L/22R and 13R/31L 123.9 281.55</td> <td>GND CON 121.9 348.6</td> <td>CLNC DEL 135.05 348.6</td> </tr> </table>	ATIS (ARR-NE) 128.725 (ARR-SW) 117.7 115.4	NEW YORK APP CON 128.12 269.0	KENNEDY TOWER Rwys 4R/22L and 13L/31R 119.1 281.55 Rwys 4L/22R and 13R/31L 123.9 281.55	GND CON 121.9 348.6
ATIS (ARR-NE) 128.725 (ARR-SW) 117.7 115.4	NEW YORK APP CON 128.12 269.0	KENNEDY TOWER Rwys 4R/22L and 13L/31R 119.1 281.55 Rwys 4L/22R and 13R/31L 123.9 281.55	GND CON 121.9 348.6	CLNC DEL 135.05 348.6	



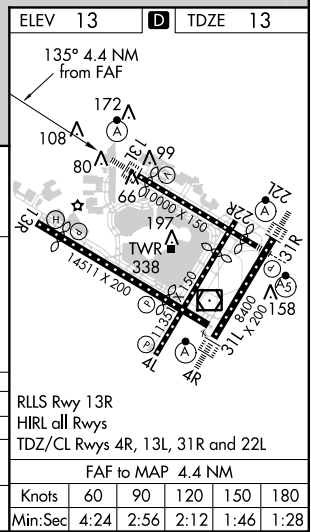
NE-2, 26 JUN 2014 to 24 JUL 2014

NE-2, 26 JUN 2014 to 24 JUL 2014

RADAR REQUIRED



	A	B	C	D
S-ILS 13L	218/18 205 (300-1/2)			
S-LOC 13L	680/24 667 (700-1/2)		680/60 667 (700-1 1/4)	680-1 1/2 667 (700-1 1/2)
CIRCLING	680-1 667 (700-1)		680-1 3/4 667 (700-1 3/4)	680-2 667 (700-2)



ELEV 13	TDZE 13
135° 4.4 NM from FAF	
FAF to MAP 4.4 NM	
Knots	60 90 120 150 180
Min:Sec	4:24 2:56 2:12 1:46 1:28