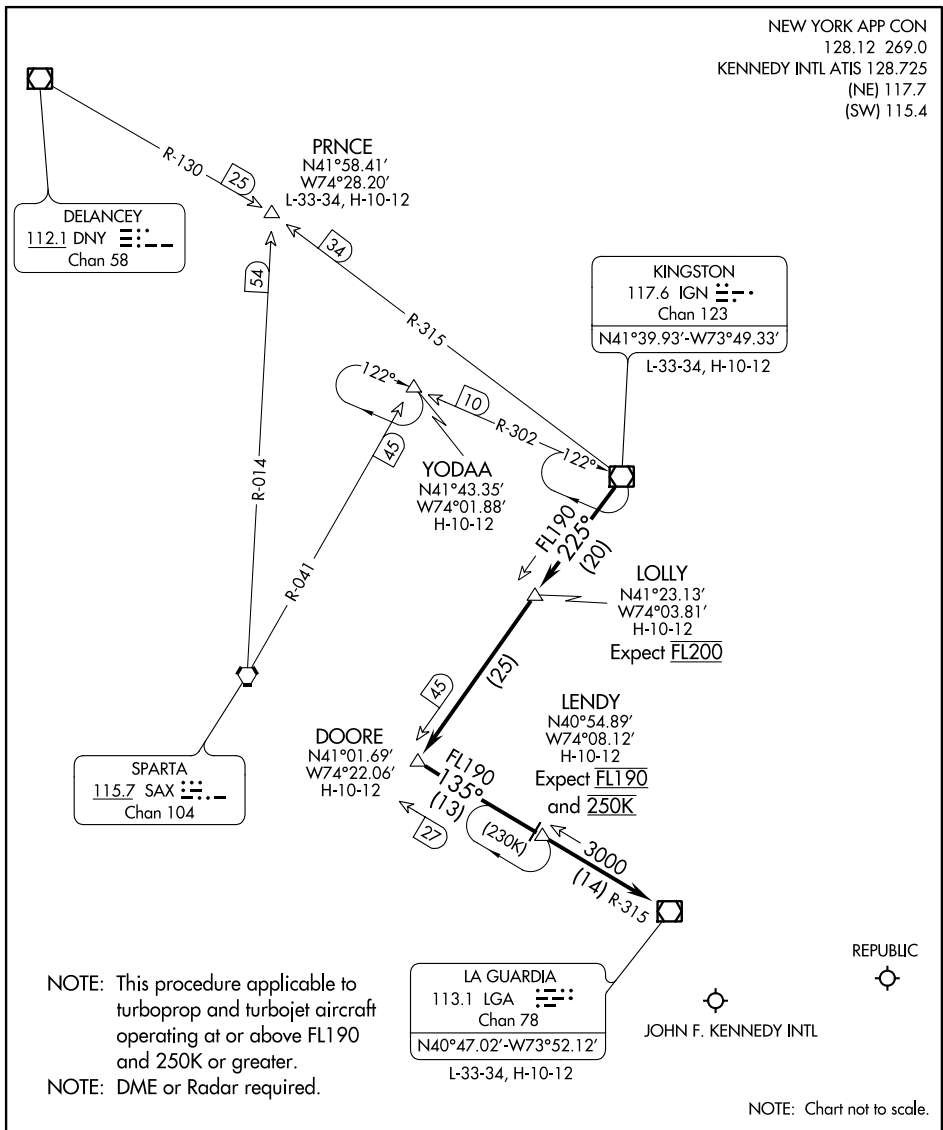


KINGSTON ONE ARRIVAL

NEW YORK, NEW YORK

NEW YORK APP CON
 128.12 269.0
 KENNEDY INTL ATIS 128.725
 (NE) 117.7
 (SW) 115.4



NE-2, 26 JUN 2014 to 24 JUL 2014

NE-2, 26 JUN 2014 to 24 JUL 2014

NOTE: This procedure applicable to turboprop and turbojet aircraft operating at or above FL190 and 250K or greater.
 NOTE: DME or Radar required.

NOTE: Chart not to scale.

ARRIVAL ROUTE DESCRIPTION

From over IGN VOR/DME on IGN R-225 to LOLLY/20 DME, then on IGN R-225 to DOORE INT, then on LGA R-315 to LENDY/14 DME, then on LGA R-315 to LGA VOR/DME. Expect radar vectors to final approach course after LGA VOR/DME.

KINGSTON ONE ARRIVAL

NEW YORK, NEW YORK