

# PARCH ONE ARRIVAL (RNAV)

ST-610 (FAA)

NEW YORK, NEW YORK

NE-2, 26 JUN 2014 to 24 JUL 2014

NEW YORK APP CON  
125.7 269.0  
KENNEDY INTL ATIS 128.725  
(NE) 117.7  
(SW) 115.4

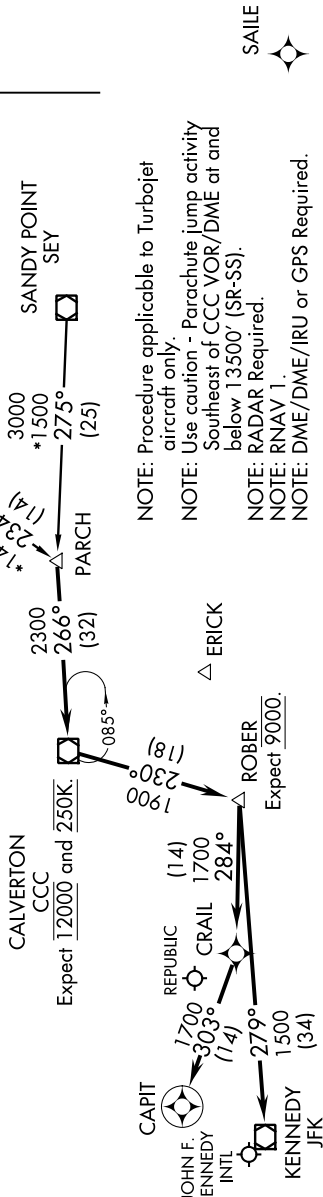
### ARRIVAL ROUTE DESCRIPTION

- KENNEBUNK TRANSITION (ENE.PARCH1)
- PLYMM TRANSITION (PLYMM.PARCH1)
- SANDY POINT TRANSITION (SEY.PARCH1)

From PARCH via 266° track to CCC VOR/DME. Then via 230° track to ROBER. Thence . . .

- . . . LDG Rwy 4R/L, Rwy 13R/L, Rwy 31R/L: From ROBER via 279° track to JFK VOR/DME, expect radar vectors to final approach course.
- . . . LDG Rwy 22R/L: From ROBER via 284° track to CRAIL. Then via 303° track to CAPIT, expect radar vectors to final approach course.
- . . . LDG Republic (KFRG) Airport: Approaching ROBER expect radar vectors to final approach course.

. . . LDG Republic (KFRG) Airport: Approaching ROBER expect radar vectors to final approach course.



- NOTE: Procedure applicable to Turbojet aircraft only.
- NOTE: Use caution - Parachute jump activity Southeast of CCC VOR/DME at and below 13500' (SR-SS).
- NOTE: RADAR Required.
- NOTE: RNAV 1.
- NOTE: DME/DME/IRU or GPS Required.

NOTE: Chart not to scale.

# PARCH ONE ARRIVAL (RNAV)

NEW YORK, NEW YORK

NE-2, 26 JUN 2014 to 24 JUL 2014