

ROBER ONE ARRIVAL

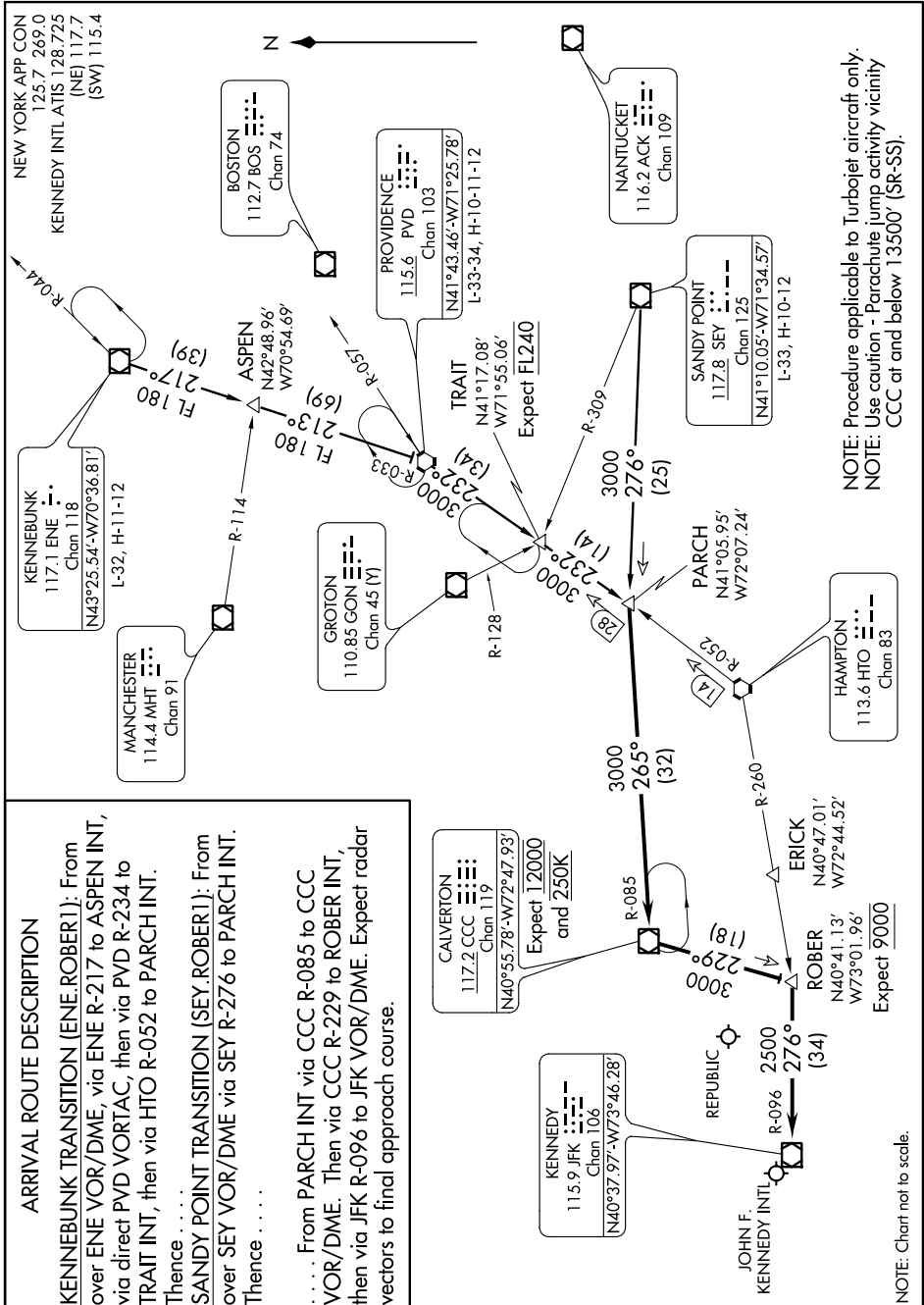
NE-2, 26 JUN 2014 to 24 JUL 2014

ARRIVAL ROUTE DESCRIPTION

KENNEBUNK TRANSITION (ENE.ROBER1): From over ENE VOR/DME, via ENE R-217 to ASPEN INT, via direct PVD VORTAC, then via PVD R-234 to TRAIT INT, then via HTO R-052 to PARCH INT. Thence

SANDY POINT TRANSITION (SEY.ROBER1): From over SEY VOR/DME via SEY R-276 to PARCH INT. Thence

. . . . From PARCH INT via CCC R-085 to CCC VOR/DME. Then via CCC R-229 to ROBER INT, then via JFK R-096 to JFK VOR/DME. Expect radar vectors to final approach course.



NOTE: Procedure applicable to Turbojet aircraft only.
 NOTE: Use caution - Parachute jump activity vicinity CCC at and below 13500' (SR-SS).

NE-2, 26 JUN 2014 to 24 JUL 2014

ROBER ONE ARRIVAL

NOTE: Chart not to scale.