

APP CRS	Rwy Idg	8400
225°	THRE	13
	Apt Elev	14

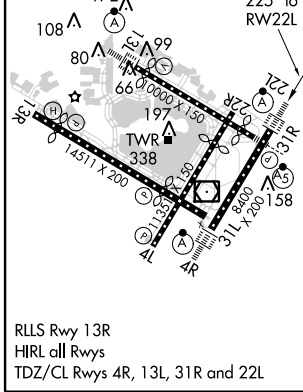
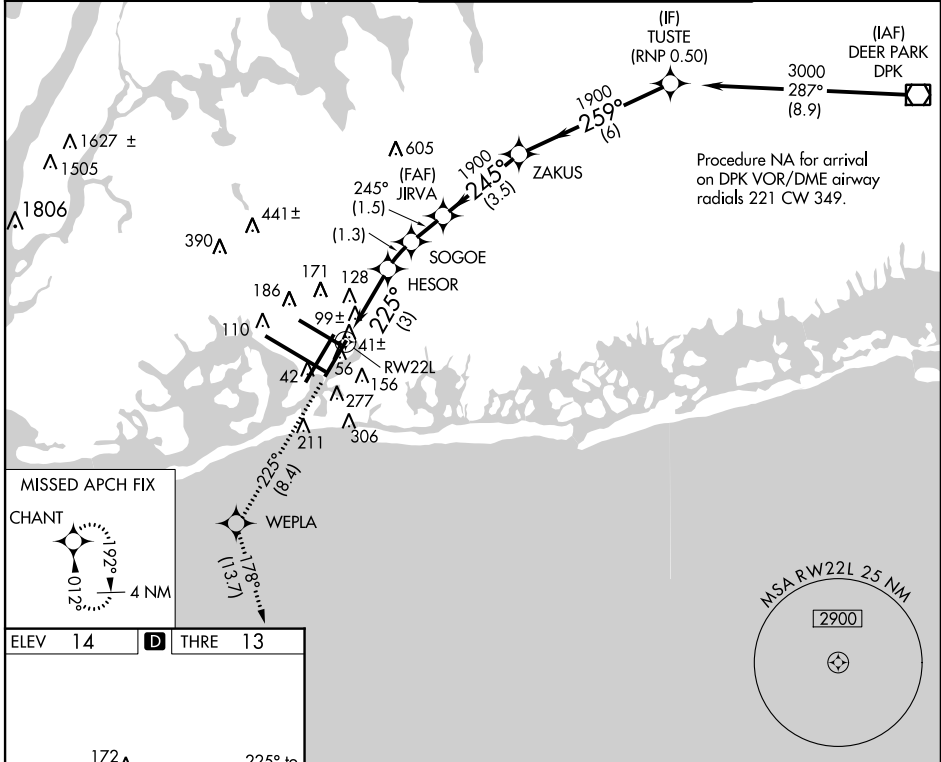
RNAV (RNP) Z RWY 22L

JOHN F. KENNEDY INTL (JFK)

For uncompensated Baro-VNAV systems, procedure NA below -12°C (11°F) or above 54°C (130°F). RF required. GPS required. Simultaneous approach authorized with ILS Rwy 22R. Use of FD or AP providing RNAV track guidance required during simultaneous operations. For inop ALSF, increase RNP 0.20 and RNP 0.30 all Cats visibility to RVR 6000.

ALSF-2 MISSED APPROACH: Climb to 3000 on track 225° to WEPLA and on track 178° to CHANT and hold.

ATIS (ARR-NE) (ARR-SW)	NEW YORK APP CON	KENNEDY TOWER Rwy 4R/22L and 13L/31R	RND CON	CLNC DEL
128.725 117.7 115.4	128.12 269.0	119.1 281.55 Rwy 4L/22R and 13R/31L	121.9 348.6	135.05 348.6



ELEV 14	D	THRE 13
<p>3000 tr 225° WEPLA tr 178° CHANT</p> <p>VGSI and RNAV glidepath not coincident (VGSI Angle 3.00/TCH 66).</p>		
<p>JIRVA ZAKUS TUSTE</p> <p>HESOR SOGOE</p> <p>1019 1429 1900 1900 3000</p> <p>RWY 22L 225° 245° 259°</p> <p>3 NM 1.3 NM 1.5 NM 3.5 NM 6 NM</p> <p>GP 3.00° TCH 50</p>		
CATEGORY	A	B C D
RNP 0.20 DA		317/40 304 (400-¾)
RNP 0.30 DA		406/40 393 (400-¾)
AUTHORIZATION REQUIRED		

NE-2, 26 JUN 2014 to 24 JUL 2014

NE-2, 26 JUN 2014 to 24 JUL 2014