

APP CRS	Rwy Idg	11248
315°	TDZE	13
	Apt Elev	13

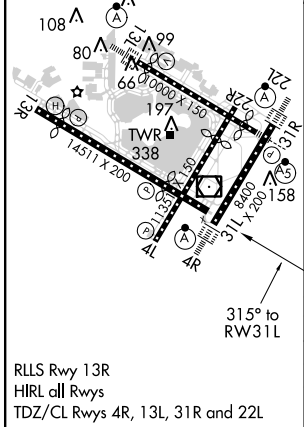
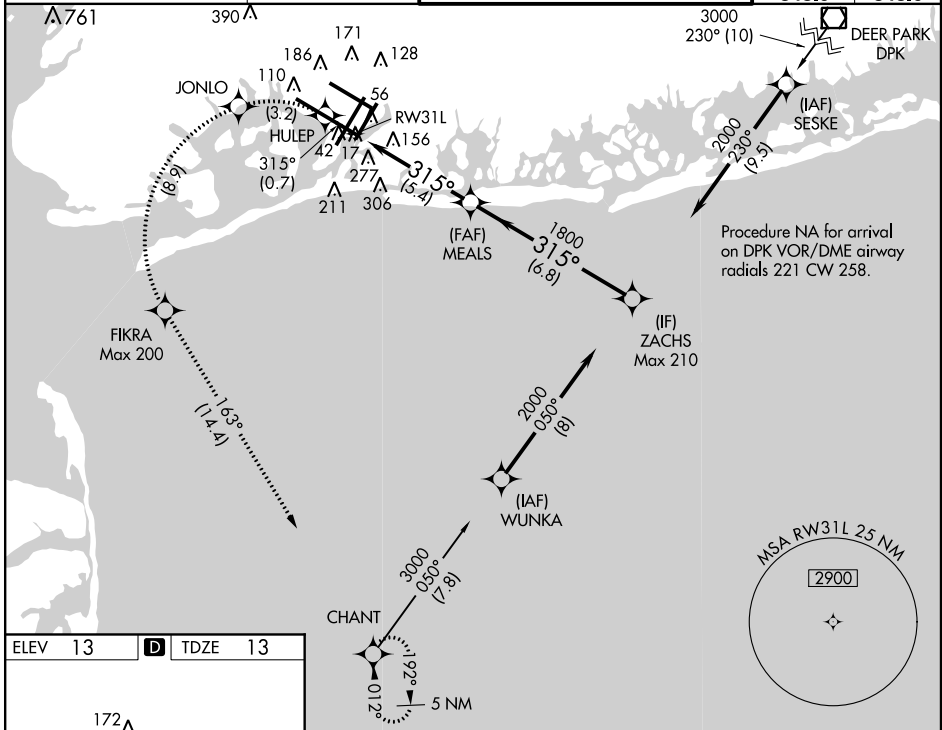
RNAV (RNP) Z RWY 31L

JOHN F. KENNEDY INTL (JFK)

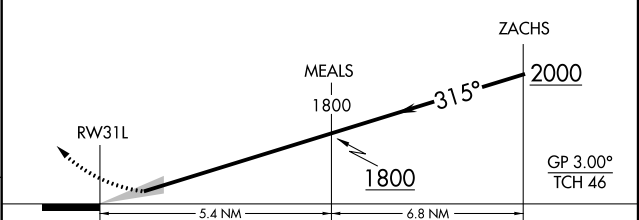
▽ For uncompensated Baro-VNAV systems, procedure NA below -13°C (9°F) or above 49°C (120°F). Missed approach requires RNP less than 1.0. *RNP 0.30 missed approach requires minimum climb of 463' per NM to 700. RF and GPS Required.

MISSSED APPROACH: (Do not exceed 200 KIAS until FIKRA) Climb to 3000 via 315° track to HULEP, and via left turn to JONLO, and via left turn to FIKRA, and via 163° track to CHANT and hold.

ATIS (ARR-NE) (ARR-SW)	NEW YORK APP CON	KENNEDY TOWER Rwys 4R/22L and 13L/31R Rwys 4L/22R and 13R/31L	GND CON	CLNC DEL
128.725 117.7 115.4	128.12 269.0	119.1 281.55 123.9 281.55	121.9 348.6	135.05 348.6



3000	HULEP	JONLO	FIKRA	CHANT	Procedure Turn NA
tr 315°				tr 163°	



CATEGORY	A	B	C	D
RNP 0.30*		316/50	303 (400-1)	
RNP 0.30		455-1½	442 (500-1½)	

AUTHORIZATION REQUIRED