


APP CRS	Rwy Idg	8970
315°	TDZE	13
	Apt Elev	13

RNAV (RNP) Z RWY 31R

JOHN F. KENNEDY INTL (JFK)

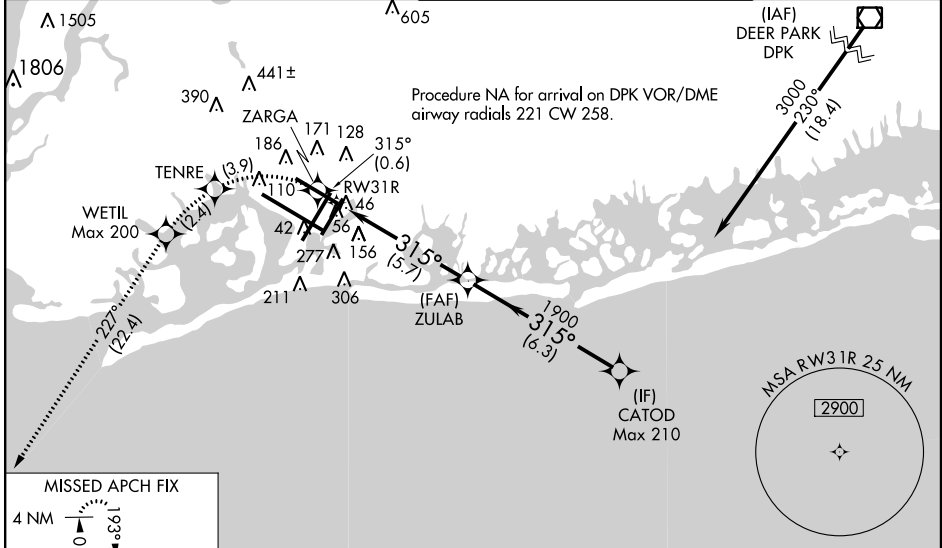
▽ For uncompensated Baro-VNAV systems, procedure NA below -13°C (9°F) or above 49°C (120°F). Missed approach requires RNP less than 1.0. ****RNP 0.20** missed approach requires minimum climb of 366 feet per NM to 700. *****RNP 0.30** missed approach requires minimum climb of 327 feet per NM to 700. RF and GPS Required. For inoperative MALSR, increase RNP 0.20 DA visibility to RVR 5000 all Cats, RNP 0.30 DA*** visibility to RVR 5000 all Cats, RNP 0.30 DA visibility to 1/2 all Cats.

MALSR



MISSED APPROACH: (Do not exceed 200 KIAS until WETIL) Climb to 4000 via track 315° to ZARGA and via left turn to TENRE and via left turn to WETIL and via track 227° to COL VOR/DME and hold.

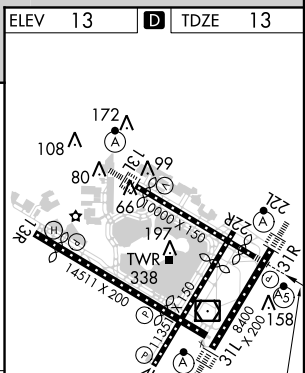
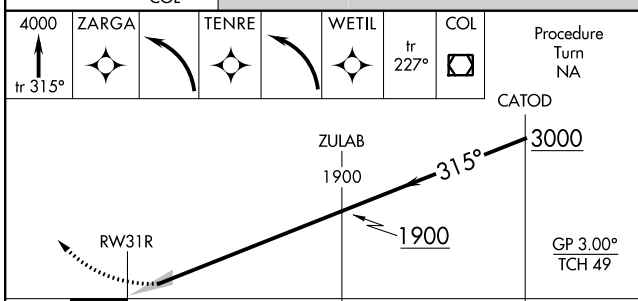
ATIS (ARR-NE)	(ARR-SW)	NEW YORK APP CON	KENNEDY TOWER	GND CON	CLNC DEL
128.725	117.7	115.4	Rwys 4R/22L and 13L/31R 119.1 281.55 Rwys 4L/22R and 13R/31L 123.9 281.55	121.9 348.6	135.05 348.6



NE-2, 26 JUN 2014 to 24 JUL 2014

NE-2, 26 JUN 2014 to 24 JUL 2014

ELEV	13	D	TDZE	13
------	-----------	----------	------	-----------



CATEGORY	A	B	C	D
RNP 0.20 DA**		274/24	261 (300-1/2)	
RNP 0.30 DA***		317/24	304 (400-1/2)	
RNP 0.30 DA		413/50	400 (400-1)	

AUTHORIZATION REQUIRED

RLS Rwy 13R
HIRL all Rwys
TDZ/CL Rwys 4R, 13L, 31R and 22L