

APP CRS	Rwy Idg	<b>11351</b>
<b>045°</b>	TDZE	<b>12</b>
	Apt Elev	<b>13</b>

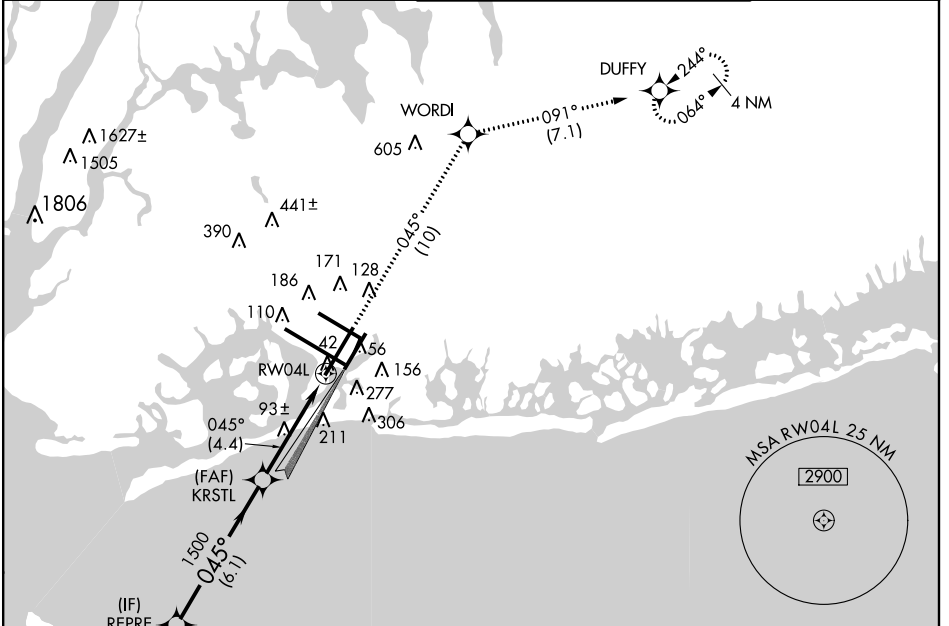
# RNAV (RNP) Z RWY 4L

JOHN F. KENNEDY INTL (JFK)

**⚠** GPS Required. For uncompensated Baro-VNAV systems, procedure NA below -13°C (9°F) or above 48°C (118°F). Visibility reduction by helicopters NA.  
**⚠ NA** Simultaneous approach authorized with Rwy 4R. Use of FD or AP providing RNAV track guidance required during simultaneous operations.

MISSED APPROACH: Climb to 3000 via 045° track to WORDI and via 091° track to DUFFY and hold.

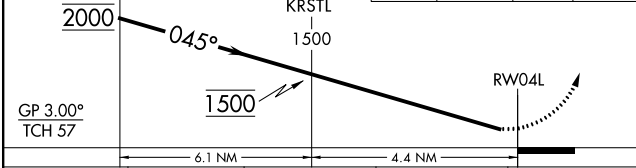
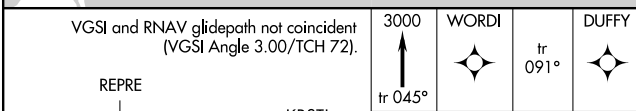
ATIS (ARR-NE) (ARR-SW)			NEW YORK APP CON		KENNEDY TOWER		GND CON	CLNC DEL
<b>128.725</b>	<b>117.7</b>	<b>115.4</b>	<b>128.12</b>	<b>269.0</b>	Rwys 4R/22L and 13L/31R	<b>119.1 281.55</b>	<b>121.9</b>	<b>135.05</b>
					Rwys 4L/22R and 13R/31L	<b>123.9 281.55</b>	<b>348.6</b>	<b>348.6</b>



NE-2, 26 JUN 2014 to 24 JUL 2014

NE-2, 26 JUN 2014 to 24 JUL 2014

## RADAR REQUIRED



CATEGORY	A	B	C	D
RNP 0.30 DA		361/60	349 (400-1¼)	

## AUTHORIZATION REQUIRED

