

WAAS CH <b>77519</b> <b>W04A</b>	APP CRS <b>045°</b>	Rwy Idg <b>11351</b> TDZE <b>12</b> Apt Elev <b>14</b>
--	------------------------	--

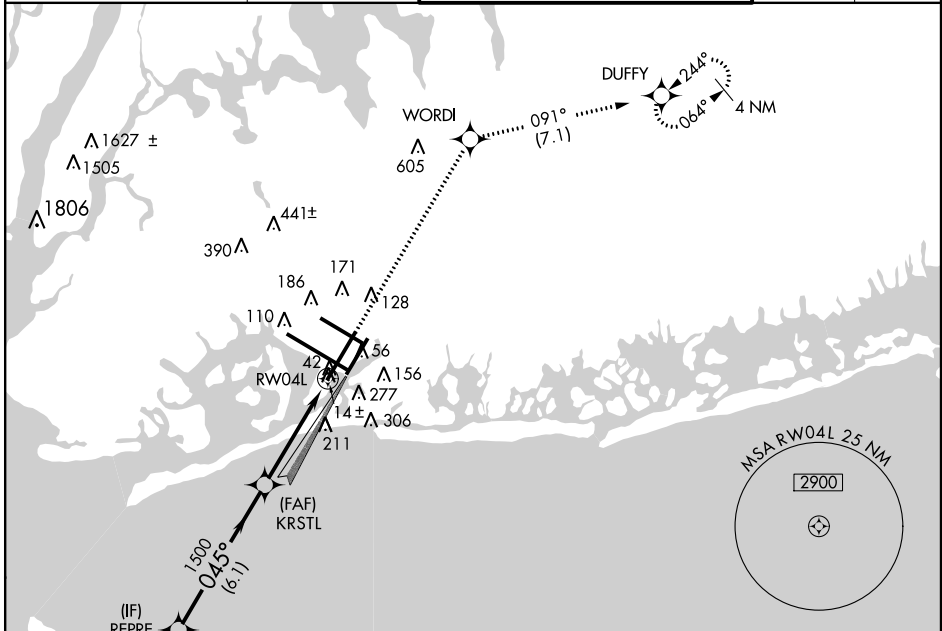
# RNAV (GPS) Y RWY 4L

JOHN F. KENNEDY INTL (JFK)

**▼** For uncompensated Baro-VNAV systems, LNAV/VNAV NA below -15°C (5°F) or above 48°C (118°F). DME/DME RNP-0.3 NA. Simultaneous approach authorized with Rwy 4R. LNAV procedure NA during simultaneous operations. Use of FD or AP providing RNAV track guidance required during simultaneous operations.

**MISSED APPROACH:** Climb to 2000 direct WORDI then climb to 3000 on track 091° to DUFFY and hold.

ATIS (ARR-NE) (ARR-SW) <b>128.725 117.7 115.4</b>	NEW YORK APP CON <b>128.12 269.0</b>	KENNEDY TOWER Rwys 4R/22L and 13L/31R <b>119.1 281.55</b> Rwys 4L/22R and 13R/31L <b>123.9 281.55</b>	GND CON <b>121.9 348.6</b>	CLNC DEL <b>135.05 348.6</b>
---	---	---	-------------------------------	---------------------------------



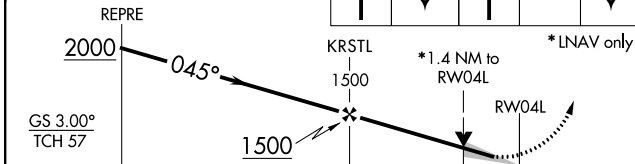
NE-2, 26 JUN 2014 to 24 JUL 2014

NE-2, 26 JUN 2014 to 24 JUL 2014

## RADAR REQUIRED

VGSI and RNAV glidepath not coincident (VGSI Angle 3.00/TCH 72).

2000	WORDI	3000	DUFFY
↑	✧	↑	tr 091° ✧



CATEGORY	A	B	C	D
LPV DA	280/50		268 (300-1)	
LNAV/VNAV DA	480-1½		468 (500-1½)	
LNAV MDA	540/50	528 (600-1)	540-1½ 528 (600-1½)	540-1¾ 528 (600-1¾)
CIRCLING	640-1	626 (700-1)	640-1¾ 626 (700-1¾)	640-2 626 (700-2)

