

(SKORR3.SKORR) 13290

SKORR THREE DEPARTURE (RNAV) SL-610 (FAA)

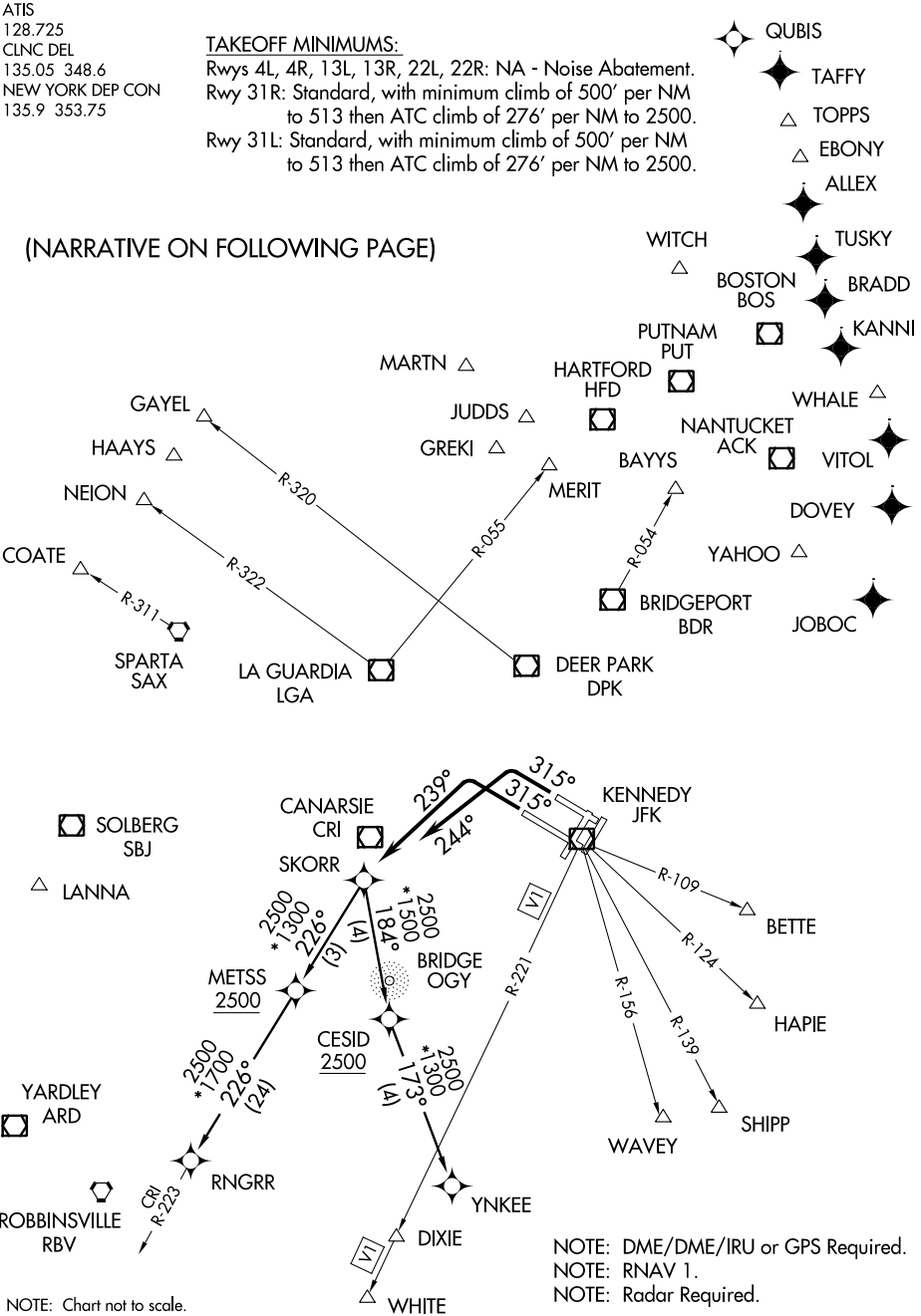
JOHN F. KENNEDY INTL (JFK)
NEW YORK, NEW YORK

ATIS
128.725
CLNC DEL
135.05 348.6
NEW YORK DEP CON
135.9 353.75

TAKEOFF MINIMUMS:

Rwys 4L, 4R, 13L, 13R, 22L, 22R: NA - Noise Abatement.
Rwy 31R: Standard, with minimum climb of 500' per NM to 513 then ATC climb of 276' per NM to 2500.
Rwy 31L: Standard, with minimum climb of 500' per NM to 513 then ATC climb of 276' per NM to 2500.

(NARRATIVE ON FOLLOWING PAGE)



NE-2, 26 JUN 2014 to 24 JUL 2014

NE-2, 26 JUN 2014 to 24 JUL 2014

NOTE: Chart not to scale.

NOTE: DME/DME/IRU or GPS Required.
NOTE: RNAV 1.
NOTE: Radar Required.

SKORR THREE DEPARTURE (RNAV)
(SKORR3.SKORR) 13290

NEW YORK, NEW YORK
JOHN F. KENNEDY INTL (JFK)