

NEW YORK, NEW YORK

AL-610 (FAA)

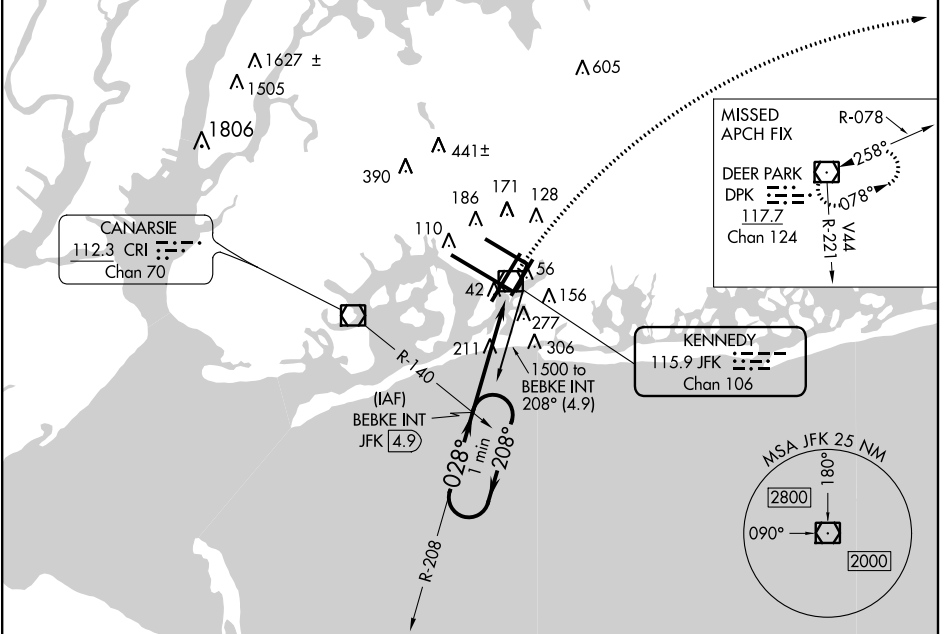
VOR/DME JFK <b>115.9</b> Chan <b>106</b>	APP CRS <b>028°</b>	Rwy Idg <b>8400</b> TDZE <b>13</b> Apt Elev <b>13</b>
--	------------------------	---

# VOR RWY 4R

JOHN F. KENNEDY INTL (JFK)

		MISSED APPROACH: Climbing right turn to 4000 via heading 100° and V44 to DPK VOR/DME and hold.	
--	--	--	--

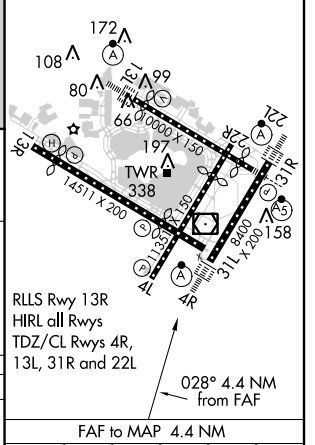
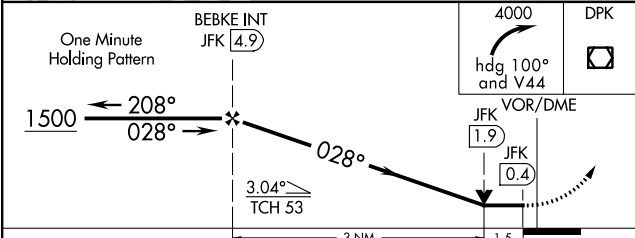
ATIS (ARR-NE) (ARR-SW) <b>128.725 117.7 115.4</b>	NEW YORK APP CON <b>128.12 269.0</b>	KENNEDY TOWER Rwys 4R/22L and 13L/31R <b>119.1 281.55</b> Rwys 4L/22R and 13R/31L <b>123.9 281.55</b>	GND CON <b>121.9 135.05</b> <b>348.6</b>	CLNC DEL <b>135.05</b> <b>348.6</b>
---	---	---	--	---



NE-2, 26 JUN 2014 to 24 JUL 2014

NE-2, 26 JUN 2014 to 24 JUL 2014

ELEV 13	<b>D</b> TDZE 13
---------	------------------



CATEGORY	A	B	C	D
S-4R	540/24 527 (600-½)		540/50 527 (600-1)	540/60 527 (600-1¼)
CIRCLING	640-1 627 (700-1)		640-1¾ 627 (700-1¾)	640-2 627 (700-2)

FAF to MAP 4.4 NM					
Knots	60	90	120	150	180
Min:Sec	4:24	2:56	2:12	1:46	1:28

NEW YORK, NEW YORK  
Orig 14037

40°38'N-73°47'W

# JOHN F. KENNEDY INTL (JFK)

## VOR RWY 4R