

LOC/DME I-ETI 110.7	APP CRS 091°	Rwy ldg 5350 TDZE 19 Apt Elev 19
Chan 44		

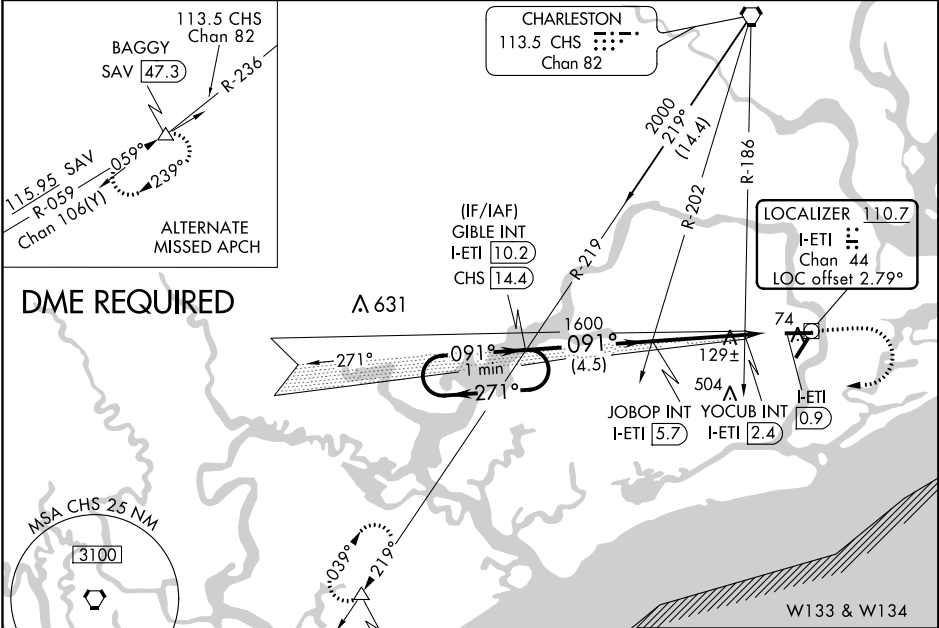
ILS or LOC RWY 9

CHARLESTON EXECUTIVE (JZI)

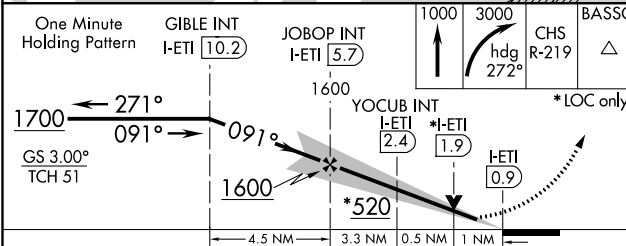
▼ DME required. Helicopter visibility reduction below 3/4 SM NA. When local altimeter setting not received, use Charleston AFB/Intl altimeter setting and increase DA 32 feet and all MDAs 40 feet, increase S-ILS all Cats visibility 1/8 mile and S-LOC Cat C and D visibility 1/4 mile and S-LOC YOCUB Fix Minimum Cat C and D visibility 1/8 mile. VDP NA when using Charleston AFB/Intl altimeter setting.

MISSED APPROACH: Climb to 1000 then climbing right turn to 3000 on heading 272° and on CHS VORTAC R-219 to BASSO/CHS 24.9 DME and hold.

AWOS-3 123.775	CHARLESTON APP CON 120.7 306.925	CLNC DEL 119.85	UNICOM 122.8 (CTAF)
--------------------------	--	---------------------------	-------------------------------



ELEV 19	TDZE 19
----------------	----------------



CATEGORY	A	B	C	D
S-ILS 9	275-3/4 256 (300-3/4)			
S-LOC 9	520-1	501 (600-1)	520-1 3/8	501 (600-1 3/8)
CIRCLING	520-1	501 (600-1)	501 (600-1 1/2)	561 (600-2)
YOCUB FIX MINIMUMS (DUAL VOR RECEIVERS or DME REQUIRED)				
S-LOC 9	380-1	361 (400-1)	380-1 1/8	361 (400-1 1/8)
CIRCLING	440-1	480-1	480-1 1/2	580-2
	421 (500-1)	461 (500-1)	461 (500-1 1/2)	561 (600-2)

MIRL Rwy 4-22					HIRL Rwy 9-27				
FAF to MAP 4.8 NM									
Knots	60	90	120	150	180				
Min:Seq	4:48	3:12	2:24	1:55	1:36				

SE-2, 25 FEB 2021 to 25 MAR 2021

SE-2, 25 FEB 2021 to 25 MAR 2021