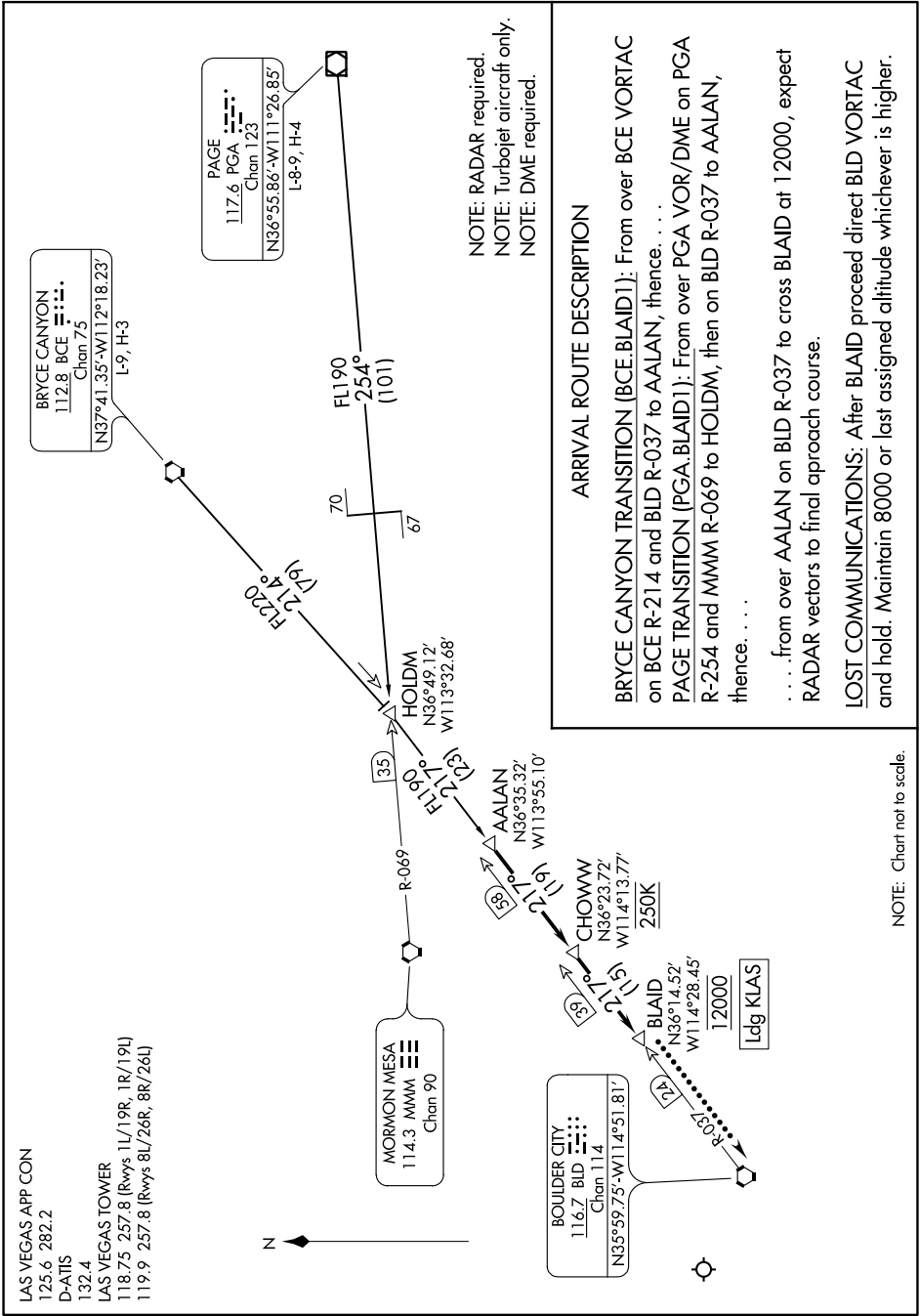


# BLAID ONE ARRIVAL

AL-662 (FAA)

MC CARRAN INTL (LAS)  
LAS VEGAS, NEVADA

SW-4, 25 FEB 2021 to 25 MAR 2021



NOTE: RADAR required.  
 NOTE: Turboplet aircraft only.  
 NOTE: DME required.

### ARRIVAL ROUTE DESCRIPTION

**BRYCE CANYON TRANSITION (BCE.BLAID1):** From over BCE VORTAC on BCE R-214 and BLD R-037 to AALAN, thence. . . .  
**PAGE TRANSITION (PGA.BLAID1):** From over PGA VOR/DME on PGA R-254 and MMM R-069 to HOLDM, then on BLD R-037 to AALAN, thence. . . .  
 . . . from over AALAN on BLD R-037 to cross BLAID at 12000, expect RADAR vectors to find approach course.  
**LOST COMMUNICATIONS:** After BLAID proceed direct BLD VORTAC and hold. Maintain 8000 or last assigned altitude whichever is higher.

NOTE: Chart not to scale.

SW-4, 25 FEB 2021 to 25 MAR 2021