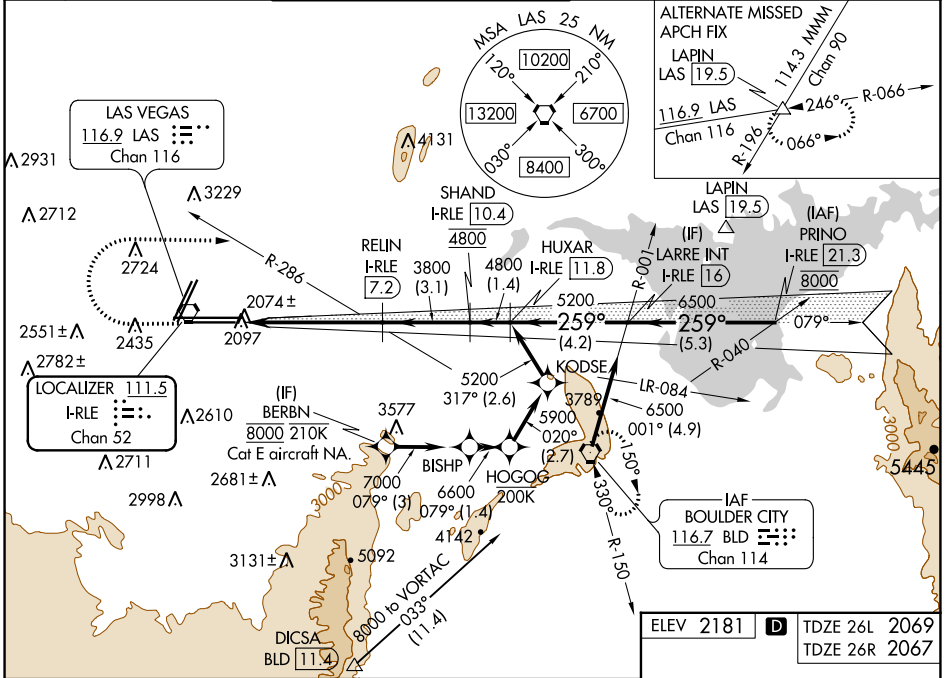


LOC/DME I-RLE 111.5 Chan 52	APP CRS 259°	Rwy Idg TDZE Apt Elev	26L 10525 2069 2181	26R 12639 2067 2181
--	------------------------	-----------------------------	---	---

ILS or LOC RWY 26L

MC CARRAN INTL (LAS)

DME required. From BERBN: RNP APCH-GPS required.		MALS Rwy 26L	MALS Rwy 26R	MISSED APPROACH: Climb to 3200 then climbing right turn to 6000 on heading 080° and BLD R-286 to BLD VORTAC and hold, continue climb-in-hold to 6000.		
Inop table does not apply to S-ILS 26L and Sidestep 26R. For inop ALS, increase S-LOC 26L Cat C/D/E visibility to 1½ SM.						
D-ATIS 132.4	LAS VEGAS APP CON 125.025 379.15 (West) 125.6 282.2 (East)	LAS VEGAS TOWER 118.75 257.8 (Rwy 1L/19R, 1R/19L) 119.9 257.8 (Rwy 8L/26R, 8R/26L)		GND CON 121.1 270.8 E of 1R/19L 121.9 254.3 W of 1R/19L	CLNC DEL 118.0	CPDLC



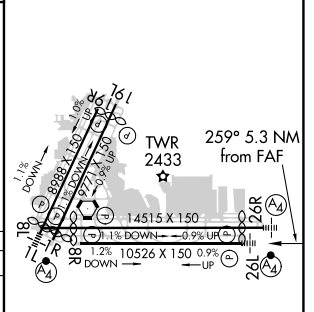
SW-4, 25 FEB 2021 to 25 MAR 2021

SW-4, 25 FEB 2021 to 25 MAR 2021

3200	6000	BLD R-286	VGSI and ILS glidepath not coincident (VGSI Angle 3.00/TCH 84).	PRINO I-RLE 21.3
*LOC only		RELIN I-RLE 3.1	SHAND I-RLE 10.4	HUXAR I-RLE 11.8
1.2 NM		4.1 NM	3.1 NM	1.4 NM
3800		4800	5200	6500
See planview for multiple IF locations.		GS 3.00° TCH 60		

CATEGORY	A	B	C	D	E
S-ILS 26L	2269-¾ 200 (100-¾)				
S-LOC 26L	2520-¾ 451 (400-¾)	2520-1 451 (400-1)			
SIDESTEP 26R	2560-1 493 (400-1)	2560-1½ 493 (400-1½)	2560-2 493 (400-2)		
CIRCLING	3020-1¼ 839 (900-1¼)	3060-1¼ 879 (900-1¼)	3100-2¾ 919 (1000-2¾)	3540-3 1359 (1400-3)	

ELEV 2181	TDZE 26L 2069
	TDZE 26R 2067



MIRL Rwy 1R-19L	FAF to MAP 5.3 NM				
REIL Rws 1R, 8R, 19L and 19R					
HIRL Rws 1L-19R, 8L-26R and 8R-26L					
Knots	60	90	120	150	180
Min:Sec	5:18	3:32	2:39	2:07	1:46