

# JOHKR ONE DEPARTURE (RNAV) Departure Routes

### TAKEOFF MINIMUMS

Rwy 1L: Standard with minimum climb of 514' per NM to 4900.

Rwy 1R: Standard with minimum climb of 526' per NM to 4800.

Rwys 8L/R: Standard with minimum climb of 500' per NM to 2682, then 219' per NM to 6300.

Rwys 19L/R: Standard with minimum climb of 500' per NM to 2682, then 334' per NM to 8900.

Rwys 26L/R: Standard with minimum climb of 500' per NM to 2682, then 345' per NM to 8900.

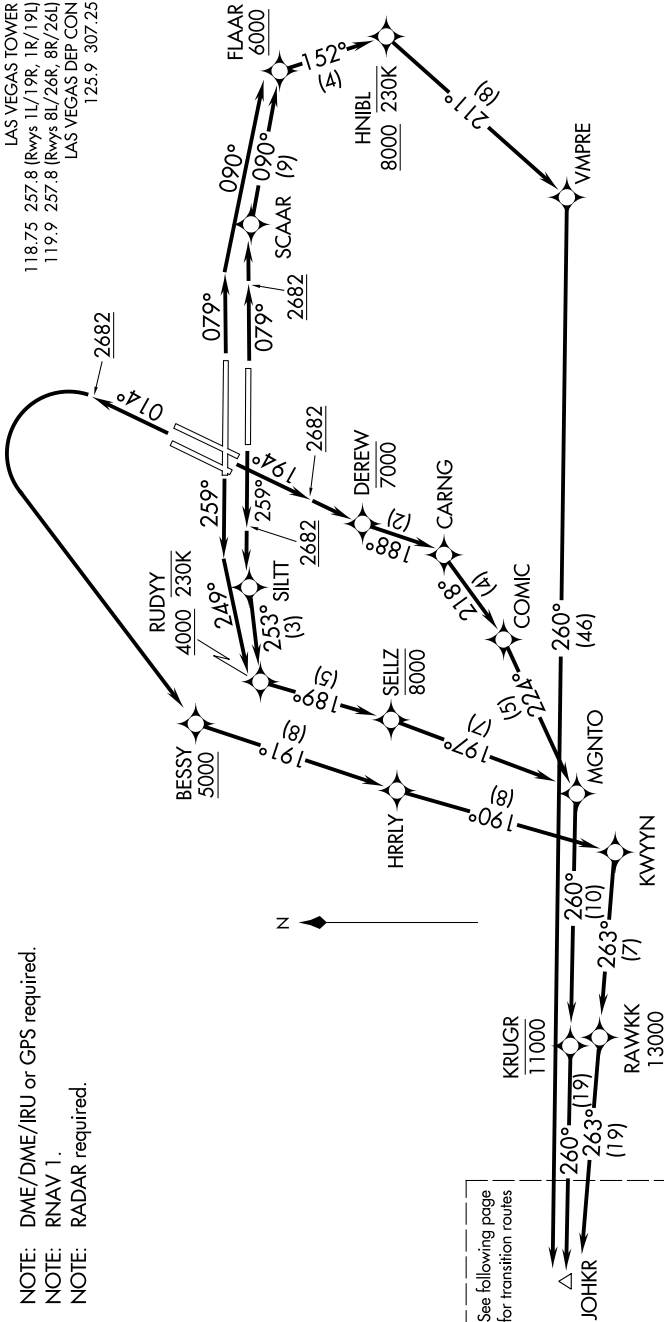
NOTE: DME/DME/IRU or GPS required.

NOTE: RNAV 1.

NOTE: RADAR required.

### TOP ALTITUDE: FL190

D-ATIS 132.4  
 CLNC DEL 118.0  
 CPDLC  
 GND CON  
 121.1 270.8 E of 1R/19L  
 121.9 254.3 W of 1R/19L  
 LAS VEGAS TOWER  
 118.75 257.8 (Rwys 1L/19R, 1R/19L)  
 119.9 257.8 (Rwys 8L/26R, 8R/26L)  
 LAS VEGAS DEP CON  
 125.9 307.25



(CONTINUED ON FOLLOWING PAGE)

NOTE: Chart not to scale.

SW-4, 25 FEB 2021 to 25 MAR 2021

SW-4, 25 FEB 2021 to 25 MAR 2021