

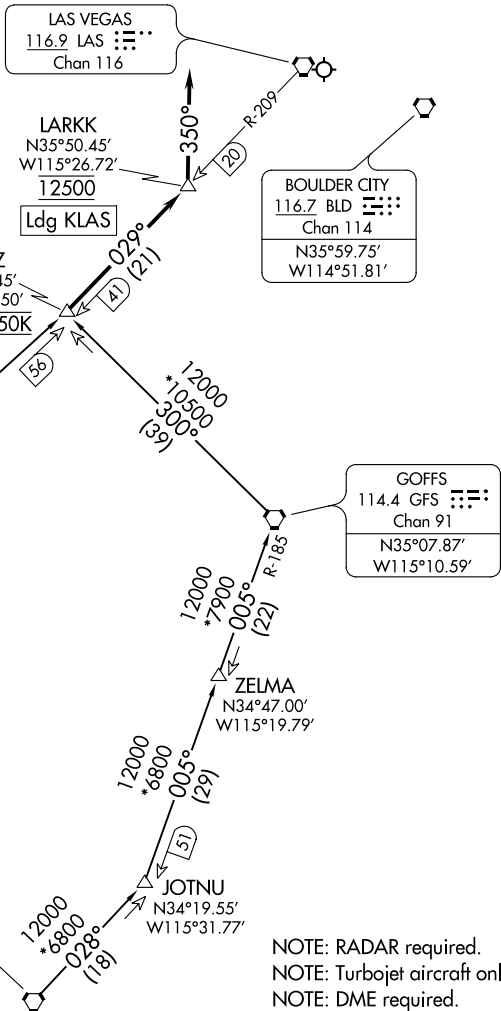
(RNRDZ.LARKK1) 21056

LARKK ONE ARRIVAL

AL-662 (FAA)

MC CARRAN INTL (L.A.S)
LAS VEGAS, NEVADA

LAS VEGAS APP CON
125.025 379.15
D-ATIS
132.4
LAS VEGAS TOWER
118.75 257.8 (Rwys 1L/19R, 1R/19L)
119.9 257.8 (Rwys 8L/26R, 8R/26L)



NOTE: Chart not to scale.

NOTE: RADAR required.
NOTE: Turbojet aircraft only.
NOTE: DME required.

ARRIVAL ROUTE DESCRIPTION

DAGGETT TRANSITION (DAG.LARKK1): From over DAG VORTAC on DAG R-032 to RNRDZ, thence. . . .

TWENTYNINE PALMS TRANSITION (TNP.LARKK1): From over TNP VORTAC on TNP R-028 and GFS R-185 to GFS VORTAC, then on GFS R-300 to RNRDZ, thence. . . .

. . . .from over RNRDZ on LAS R-209 to cross LARKK at 12500, then depart LARKK heading 350° for vectors to final approach.

LOST COMMUNICATIONS: Proceed to BLD VORTAC and hold. Maintain 8000 or last assigned altitude whichever is greater.

LARKK ONE ARRIVAL

(RNRDZ.LARKK1) 25FEB21

LAS VEGAS, NEVADA
MC CARRAN INTL (L.A.S)

SW-4, 25 FEB 2021 to 25 MAR 2021

SW-4, 25 FEB 2021 to 25 MAR 2021