

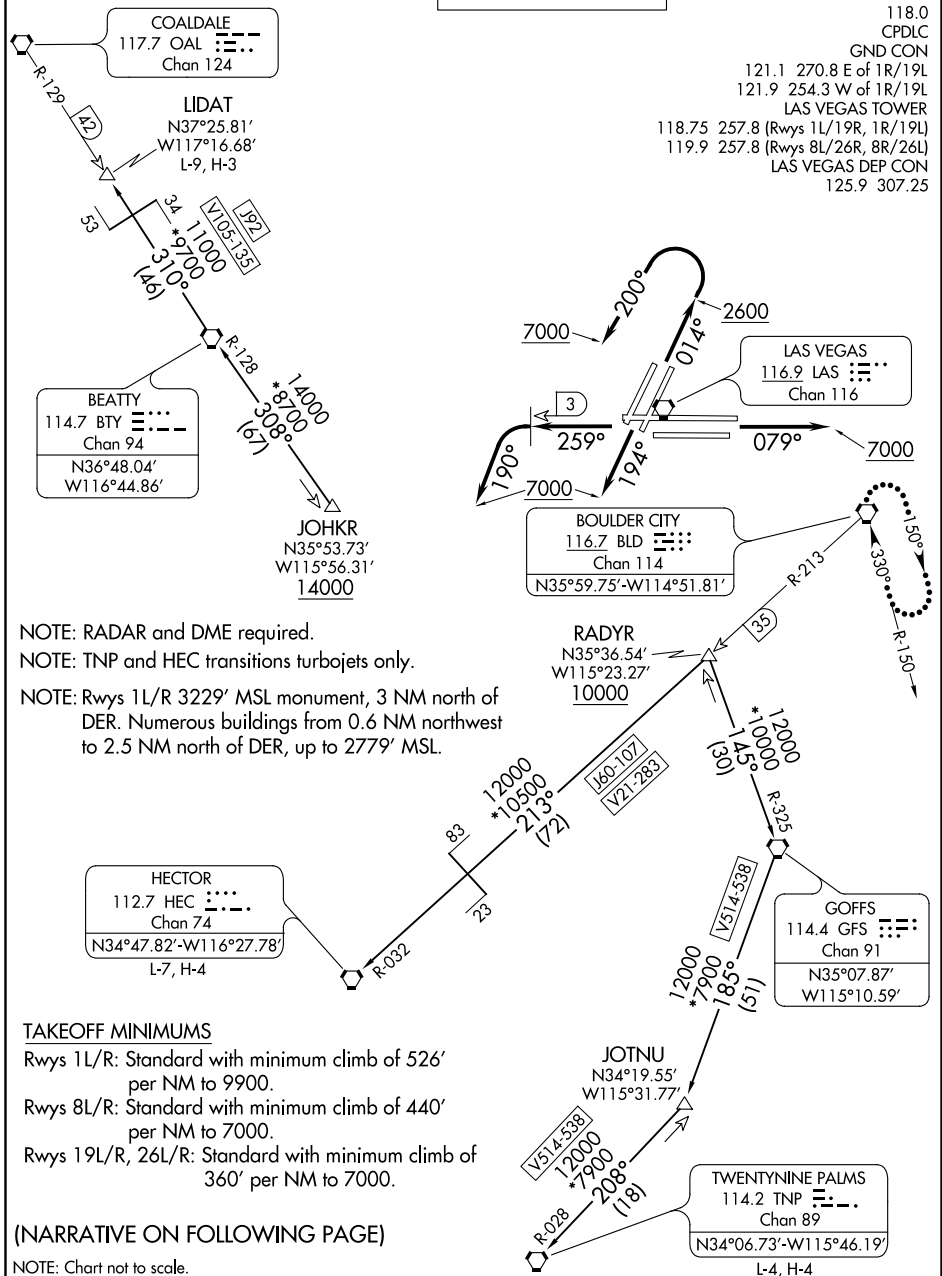
(MCCRN6.LAS) 21056
MCCARRAN SIX DEPARTURE

AL-662 (FAA)

MC CARRAN INTL (LAS)
 LAS VEGAS, NEVADA

**TOP ALTITUDE:
 ASSIGNED BY ATC**

D-ATIS
 132.4
 CLNC DEL
 118.0
 CPDLC
 GND CON
 121.1 270.8 E of 1R/19L
 121.9 254.3 W of 1R/19L
 LAS VEGAS TOWER
 119.9 257.8 (Rwys 8L/26R, 8R/26L)
 LAS VEGAS DEP CON
 125.9 307.25



NOTE: RADAR and DME required.
 NOTE: TNP and HEC transitions turbojets only.
 NOTE: Rwys 1L/R 3229' MSL monument, 3 NM north of DER. Numerous buildings from 0.6 NM northwest to 2.5 NM north of DER, up to 2779' MSL.

TAKEOFF MINIMUMS
 Rwys 1L/R: Standard with minimum climb of 526' per NM to 9900.
 Rwys 8L/R: Standard with minimum climb of 440' per NM to 7000.
 Rwys 19L/R, 26L/R: Standard with minimum climb of 360' per NM to 7000.

(NARRATIVE ON FOLLOWING PAGE)

NOTE: Chart not to scale.

SW-4, 25 FEB 2021 to 25 MAR 2021

SW-4, 25 FEB 2021 to 25 MAR 2021

(MCCRN6.LAS) 25FEB21
MCCARRAN SIX DEPARTURE

LAS VEGAS, NEVADA
 MC CARRAN INTL (LAS)