

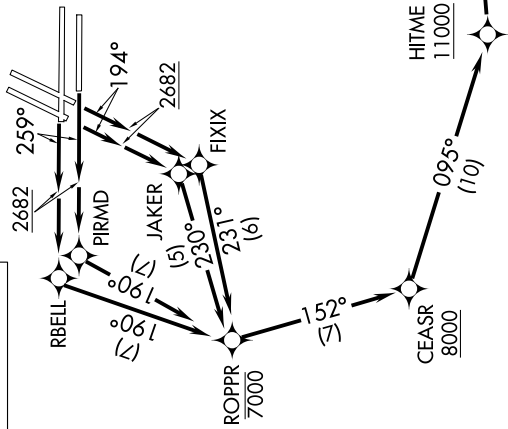
# PRFUM FOUR DEPARTURE (RNAV)

AL-662 (FAA)

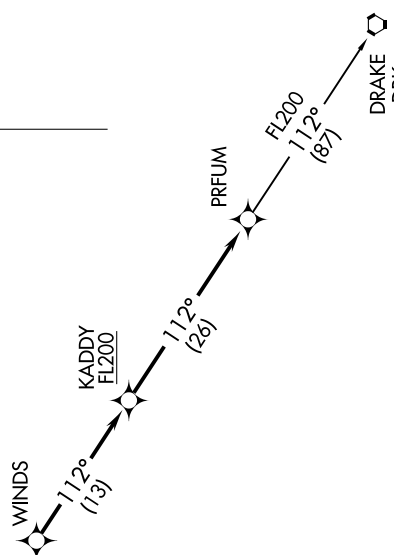
MC CARRAN INTL (LAS)  
LAS VEGAS, NEVADA

SW-4, 25 FEB 2021 to 25 MAR 2021

**TOP ALTITUDE:**  
FL190



NOTE: DME/DME/IRU or GPS required.  
 NOTE: RNAV 1.  
 NOTE: For non-GPS equipped aircraft: LAS DME must be operational.  
 NOTE: RADAR required.



NOTE: Chart not to scale.

**TAKEOFF MINIMUMS**  
 Rwys 1L/R, 8L/R: NA- air traffic.  
 Rwys 19L/R: Standard with minimum climb of 295' per NM to 5200.  
 Rwy 26L/R: Standard with minimum climb of 275' per NM to 5600.

(NARRATIVE ON FOLLOWING PAGE)

SW-4, 25 FEB 2021 to 25 MAR 2021