

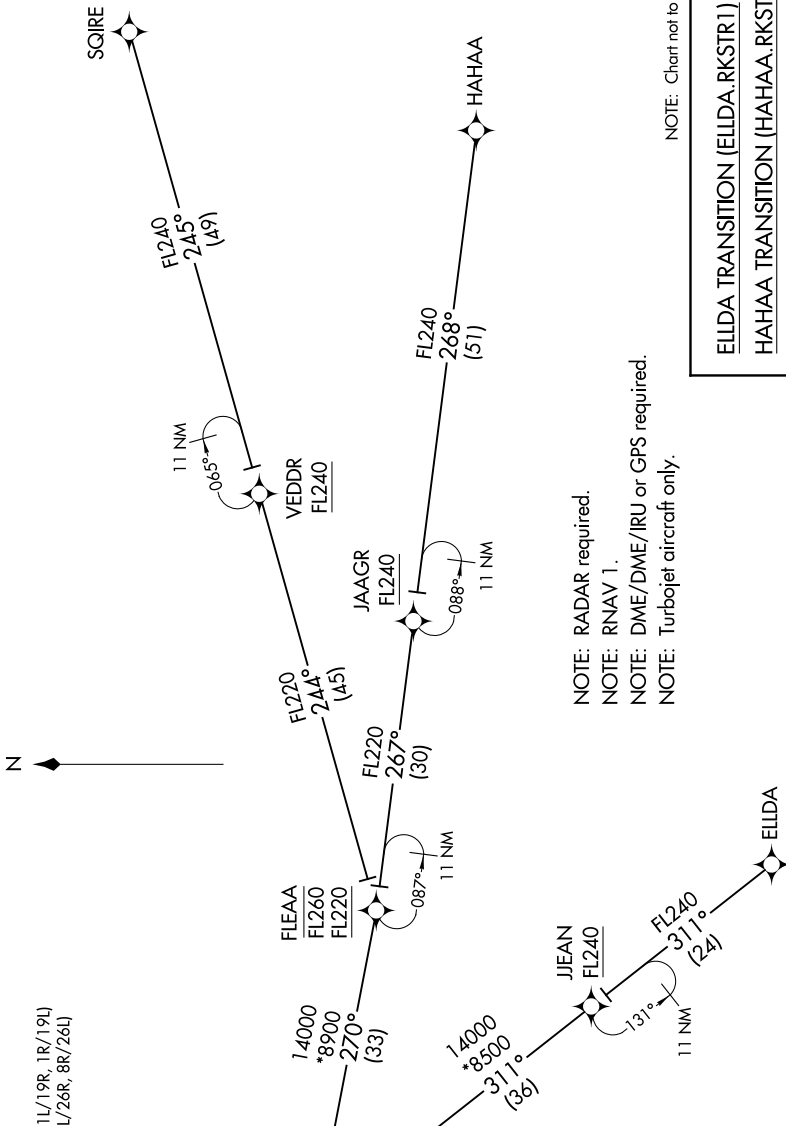
# RKSTR ONE ARRIVAL (RNAV) Transition Routes

SW-4, 25 FEB 2021 to 25 MAR 2021

LAS VEGAS APP CON  
125.6 282.2  
D-ATIS  
132.4  
LAS VEGAS TOWER  
118.75 257.8 (Rvys 1L/19R, 1R/19L)  
119.9 257.8 (Rvys 8L/26R, 8R/26L)

See following page for arrival routes.

PEHTY
FL190 280K
14000



NOTE: RADAR required.  
 NOTE: RNAV 1.  
 NOTE: DME/DME/IRU or GPS required.  
 NOTE: Turbojet aircraft only.

NOTE: Chart not to scale.

ELLDA TRANSITION (ELLDA.RKSTR1)  
 HAHAA TRANSITION (HAHAA.RKSTR1)  
 SQUIRE TRANSITION (SQUIRE.RKSTR1)

(CONTINUED ON FOLLOWING PAGE)

SW-4, 25 FEB 2021 to 25 MAR 2021