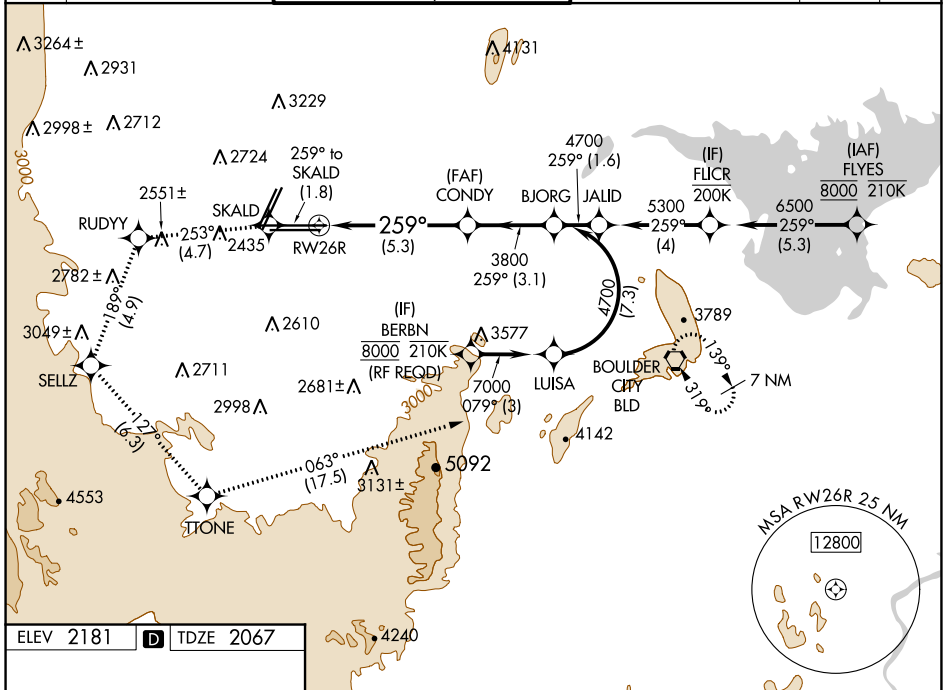


APP CRS	Rwy Idg	12639
259°	TDZE	2067
	Apt Elev	2181

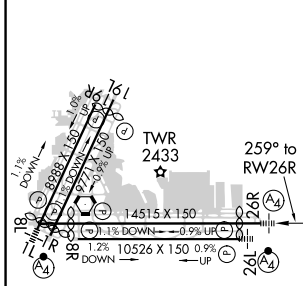
RNAV (RNP) RWY 26R

MC CARRAN INTL (LAS)

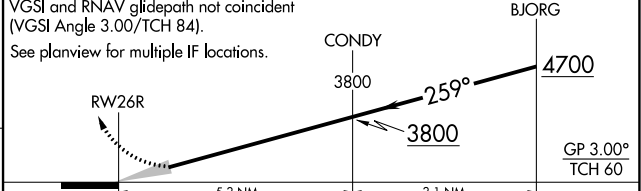
RNP AR APCH.		MALS	MISSED APPROACH: Climb to 7000 on the RNAV missed approach route to BLD VORTAC and hold. * Missed approach requires minimum climb of 235 feet per NM to 3200.			
<p>▼ For uncompensated Baro-VNAV systems, procedure NA below 0°C or above 54°C.</p>		(M)				
D-ATIS	LAS VEGAS APP CON	LAS VEGAS TOWER		GND CON	CLNC DEL	CPDLC
132.4	125.025 379.15 (West) 125.6 282.2 (East)	118.75 257.8 (Rwy 1L/19R, 1R/19L) 119.9 257.8 (Rwy 8L/26R, 8R/26L)		121.1 270.8 E of 1R/19L 121.9 254.3 W of 1R/19L	118.0	



ELEV	2181	TDZE	2067
------	-------------	------	-------------



7000	SKALD	RUDYY	SELZ	TTONE	BLD
↑	◆	tr 253°	◆	tr 127°	tr 063°
fr 259°					



CATEGORY	A	B	C	D
RNP 0.30 DA*	2457-7/8 390 (300-7/8)			
RNP 0.30 DA	2507-1 440 (400-1)			

AUTHORIZATION REQUIRED

SW-4, 25 FEB 2021 to 25 MAR 2021

SW-4, 25 FEB 2021 to 25 MAR 2021