

SHEAD ONE DEPARTURE (RNAV)

AL-662 (FAA)

MC CARRAN INTL (LAS)
LAS VEGAS, NEVADA

SW-4, 25 FEB 2021 to 25 MAR 2021

TOP ALTITUDE:
FL190

TAKEOFF MINIMUMS

- Rwys 1L/R: 1100-3 with minimum climb of 500' per NM to 6000.
- Rwys 8L/R: Standard with minimum climb of 400' per NM to 8000.
- Rwys 19L/R: Standard with minimum climb of 483' per NM to 9000.
- Rwys 26L/R: Standard with minimum climb of 470' per NM to 9000.

NOTE: DME/DME/IRU or GPS required.

NOTE: RNAV 1.

NOTE: RADAR required.

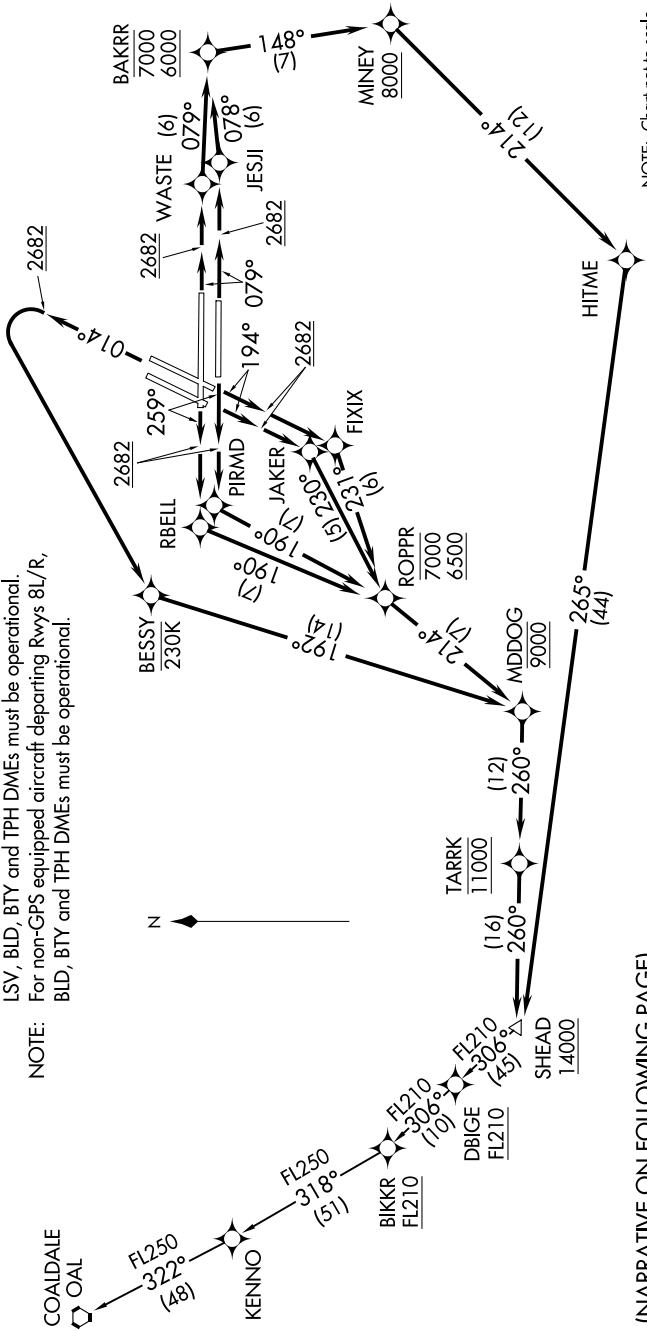
NOTE: For non-GPS equipped aircraft departing Rwys 1L/R, 19L/R, 26L/R,

LSV, BLD, BTY and TPH DMEs must be operational.

NOTE: For non-GPS equipped aircraft departing Rwys 8L/R,

BLD, BTY and TPH DMEs must be operational.

- D-ATIS 132.4
- CUNC DEL 118.0
- CPDLC 118.0
- GND CON 121.1 270.8 (E of 1R/19L)
- 121.9 254.3 (W of 1R/19L)
- LAS VEGAS TOWER 118.75 257.8 (Rwys 1L/19R, 1R/19L)
- 119.9 257.8 (Rwys 8L/26R, 8R/26L)
- LAS VEGAS DEP CON 125.9 307.25



(NARRATIVE ON FOLLOWING PAGE)

NOTE: Chart not to scale.

SHEAD ONE DEPARTURE (RNAV)

SW-4, 25 FEB 2021 to 25 MAR 2021