

DOTSS TWO DEPARTURE (RNAV)

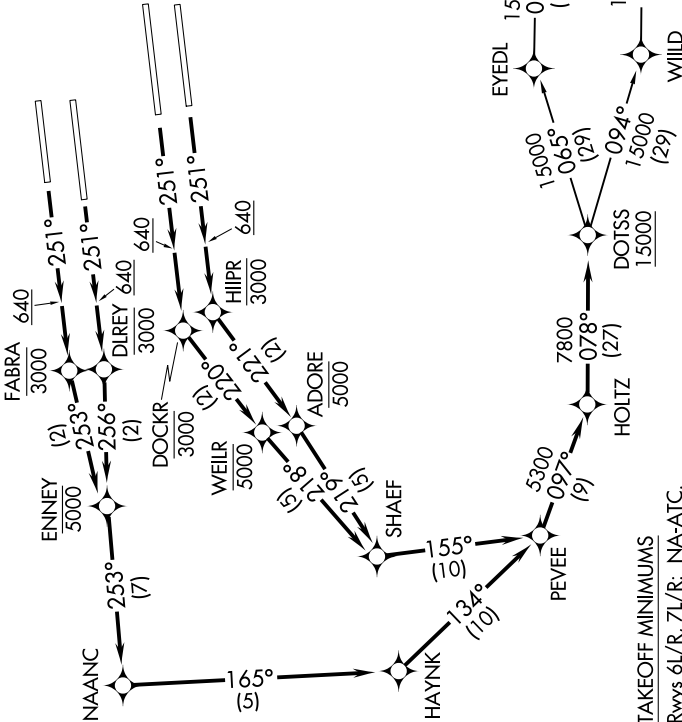
AL-237 (FAA)

LOS ANGELES INTL (LAX)
LOS ANGELES, CALIFORNIA

SW-3, 25 FEB 2021 to 25 MAR 2021

**TOP ALTITUDE:
17000**

D-ATIS DEP 135.65
 CLNC DEL 120.35 327.0
 CPDLC
 GND CON (N) 121.65 327.0
 (S) 121.75 327.0
 (W) 121.4 327.0
 LOS ANGELES TOWER (N) 133.9 239.3
 (S) 120.95 379.1
 SOCIAL DEP CON 124.3 363.2 (045°-224°)
 125.2 263.025 (225°-044°)



TAKEOFF MINIMUMS

Rwys 6L/R, 7L/R: NA-ATC.

Rwys 24L/R, 25L/R: Standard with minimum climb of 500' per NM to 640.

NOTE: DME/DME/IRU or GPS required.

NOTE: RADAR required.

NOTE: RNAV 1.

NOTE: Turbojet aircraft only.

NOTE: Turn at HIIPR and DOCKR are required for ATC separation.

(NARRATIVE ON FOLLOWING PAGE)

NOTE: Chart not to scale.

DOTSS TWO DEPARTURE (RNAV)