

LOC/DME I-LAX <b>109.9</b> Chan 36	APP CRS <b>251°</b>	Rwy ldg <b>11095</b> TDZE <b>104</b> Apt Elev <b>128</b>
--	------------------------	--

# ILS RWY 25L (CAT II & III)

LOS ANGELES INTL (LAX)

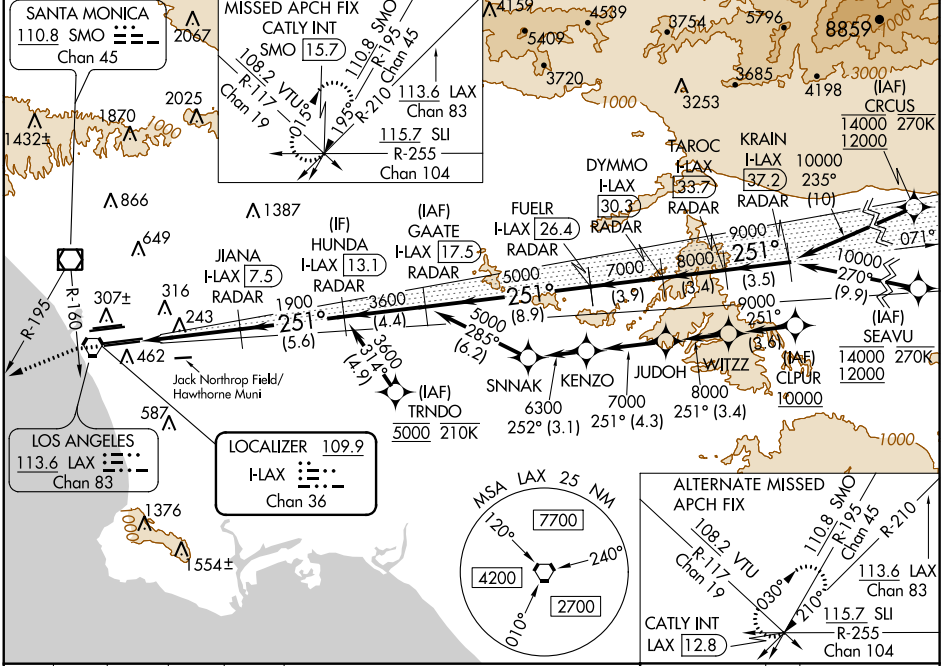
DME or RADAR required.  
From CLPUR, CRCUS, SEAVU, TRNDO: RNAV 1-GPS Required.

Simultaneous approach authorized.  
Simultaneous approach authorized with HHR.

ALSF-2

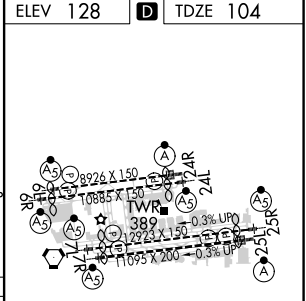
MISSED APPROACH: Climb to 2000 on heading 251° until crossing the SMO R-160 then left turn on heading 236° and on the SMO R-195 to CATLY INT/SMO 15.7 DME and hold.

D-ATIS ARR <b>133.8</b> DEP <b>135.65</b>	SOCAL APP CON <b>124.3 363.2</b> (APCH FM WEST) (225°-044°)	<b>124.9 269.0</b> (090°-224°)	LOS ANGELES TOWER <b>N 133.9 239.3</b> <b>S 120.95 379.1</b>	GND CON <b>N 121.65 327.0</b> <b>S 121.75 327.0</b> <b>W 121.4 327.0</b>	CLNC DEL <b>120.35</b> <b>327.0</b>	CPDLC
---	--	-----------------------------------	--	---	---	-------



2000 hdg 251°	SMO R-160	SMO R-195	CATLY INT	TAROC I-LAX 33.7	KRAIN I-LAX 37.2	ELEV 128	TDZE 104
1900	JIANA I-LAX 7.5	HUNDA I-LAX 13.1	GAATE I-LAX 17.5	FUELR I-LAX 26.4	DYMMO I-LAX 30.3	10000	
1900	1900	3600	5000	7000	8000	9000	
1000	5.5 NM	5.6 NM	4.4 NM	8.9 NM	3.9 NM	3.4 NM	3.5 NM

VGSI and ILS glidepath not coincident (VGSI Angle 3.00/TCH 70).



CATEGORY	A	B	C	D
S-ILS 25L	CAT II RA 107/12 100 DA 204			
S-ILS 25L	CAT III RVR 06			

## CATEGORY II & III ILS - SPECIAL AIRCREW & AIRCRAFT CERTIFICATION REQUIRED

TDZ/CL Rwyrs 6R, 7L, 24R, and 25L  
HIRL all Rwyrs

SW-3, 25 FEB 2021 to 25 MAR 2021

SW-3, 25 FEB 2021 to 25 MAR 2021