

LOC/DME I-HQB 111.7 Chan 54	APP CRS 251°	Rwy Idg TDZE Apt Elev	24L 9483 123 128	24R 8925 122 128
---	------------------------	-----------------------------	--	--

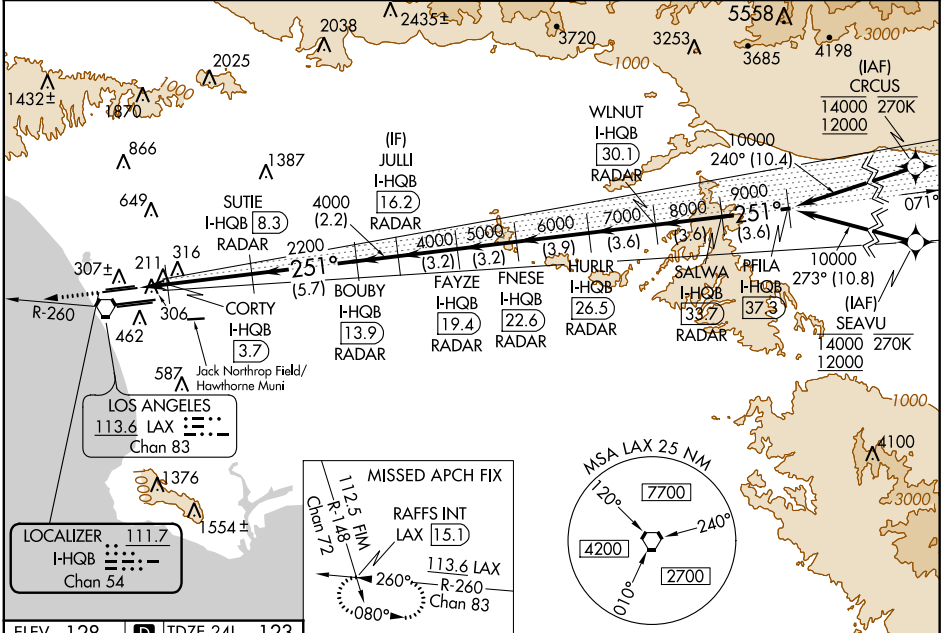
ILS or LOC RWY 24L

LOS ANGELES INTL (LAX)

From CRJUS: RNAV 1-GPS required. From SEAVU: RNAV 1-GPS required.
 DME or Radar required. RNAV 1-GPS or RADAR required for procedure entry.
 For inop ALS, increase Sidestep 24R Cat C visibility to 1½ SM. Simultaneous approach authorized. Simultaneous approach authorized with HHR. LOC procedure NA during simultaneous operations with HHR LOC RWY 25. Inop table does not apply to Sidestep RWY 24R Cat A and B.
 # RVR 1800 authorized with use of FD or AP or HUD to DA.

MALS Rwy 24L 	ALSF-2 Rwy 24R 	MISSED APPROACH: Climb to 2000 on heading 251° and LAX VORTAC R-260 to RAFFS INT/LAX 15.1 DME and hold.
------------------	--------------------	---

D-ATIS ARR 133.8 DEP 135.65	SOCAL APP CON 124.3 363.2 (APCH FM WEST) 124.5 235.975 (225°-044°)	124.9 269.0 (090°-224°) 128.5 360.7 (045°-089°)	LOS ANGELES TOWER N 133.9 239.3 S 120.95 379.1	GND CON N 121.65 327.0 S 121.75 327.0 W 121.4 327.0	CLNC DEL 120.35 327.0	CPDLC
---	--	--	--	---	---	-------



SW-3, 25 FEB 2021 to 25 MAR 2021

SW-3, 25 FEB 2021 to 25 MAR 2021

ELEV 128	TDZE 24L 123	TDZE 24R 122	VGSI and ILS glidepath not coincident (VGSI Angle 3.00/TCH 79).																																																																					
			<table border="1"> <tr> <td>2000</td> <td>LAX R-260</td> <td>RAFFS INT</td> <td>SALWA I-HQB 33.7</td> <td>PFLA I-HQB 37.3</td> <td></td> </tr> <tr> <td colspan="6">*LOC only.</td> </tr> <tr> <td>CORTY I-HQB 1.9</td> <td>SUTIE I-HQB 8.3</td> <td>BOUBY I-HQB 13.9</td> <td>JULI I-HQB 16.2</td> <td>FAYZE I-HQB 19.4</td> <td>FNESE I-HQB 22.6</td> </tr> <tr> <td colspan="6">*I-HQB 2.9</td> </tr> <tr> <td>2200</td> <td>4000</td> <td>4000</td> <td>5000</td> <td>6000</td> <td>7000</td> </tr> <tr> <td>1 NM 0.8</td> <td>4.6 NM</td> <td>5.7 NM</td> <td>2.2 NM</td> <td>3.2 NM</td> <td>3.2 NM</td> </tr> <tr> <td>3.9 NM</td> <td>3.6 NM</td> <td>3.6 NM</td> <td>3.6 NM</td> <td>3.6 NM</td> <td>3.6 NM</td> </tr> <tr> <td colspan="6">CATEGORY A B C D</td> </tr> <tr> <td colspan="6">S-ILS 24L# 323/24 200 (200-½)</td> </tr> <tr> <td colspan="6">S-LOC 24L 500/24 377 (400-½) 500-1¼ 377 (400-1¼)</td> </tr> <tr> <td colspan="6">SIDESTEP 24R 500/55 378 (400-1) 500-1¼ 378 (400-1¼) 500-1½ 378 (400-1½)</td> </tr> </table>				2000	LAX R-260	RAFFS INT	SALWA I-HQB 33.7	PFLA I-HQB 37.3		*LOC only.						CORTY I-HQB 1.9	SUTIE I-HQB 8.3	BOUBY I-HQB 13.9	JULI I-HQB 16.2	FAYZE I-HQB 19.4	FNESE I-HQB 22.6	*I-HQB 2.9						2200	4000	4000	5000	6000	7000	1 NM 0.8	4.6 NM	5.7 NM	2.2 NM	3.2 NM	3.2 NM	3.9 NM	3.6 NM	3.6 NM	3.6 NM	3.6 NM	3.6 NM	CATEGORY A B C D						S-ILS 24L# 323/24 200 (200-½)						S-LOC 24L 500/24 377 (400-½) 500-1¼ 377 (400-1¼)						SIDESTEP 24R 500/55 378 (400-1) 500-1¼ 378 (400-1¼) 500-1½ 378 (400-1½)					
2000	LAX R-260	RAFFS INT	SALWA I-HQB 33.7	PFLA I-HQB 37.3																																																																				
*LOC only.																																																																								
CORTY I-HQB 1.9	SUTIE I-HQB 8.3	BOUBY I-HQB 13.9	JULI I-HQB 16.2	FAYZE I-HQB 19.4	FNESE I-HQB 22.6																																																																			
*I-HQB 2.9																																																																								
2200	4000	4000	5000	6000	7000																																																																			
1 NM 0.8	4.6 NM	5.7 NM	2.2 NM	3.2 NM	3.2 NM																																																																			
3.9 NM	3.6 NM	3.6 NM	3.6 NM	3.6 NM	3.6 NM																																																																			
CATEGORY A B C D																																																																								
S-ILS 24L# 323/24 200 (200-½)																																																																								
S-LOC 24L 500/24 377 (400-½) 500-1¼ 377 (400-1¼)																																																																								
SIDESTEP 24R 500/55 378 (400-1) 500-1¼ 378 (400-1¼) 500-1½ 378 (400-1½)																																																																								
TDZ/CL Rwy 6R, 7L, 24R, and 25L HIRL all Rwy			FAS to MAP 6.4 NM																																																																					
Knots			60	90	120	150	180																																																																	
Min:Sec			6:24	4:16	3:12	2:34	2:08																																																																	