

SEAVU TWO ARRIVAL

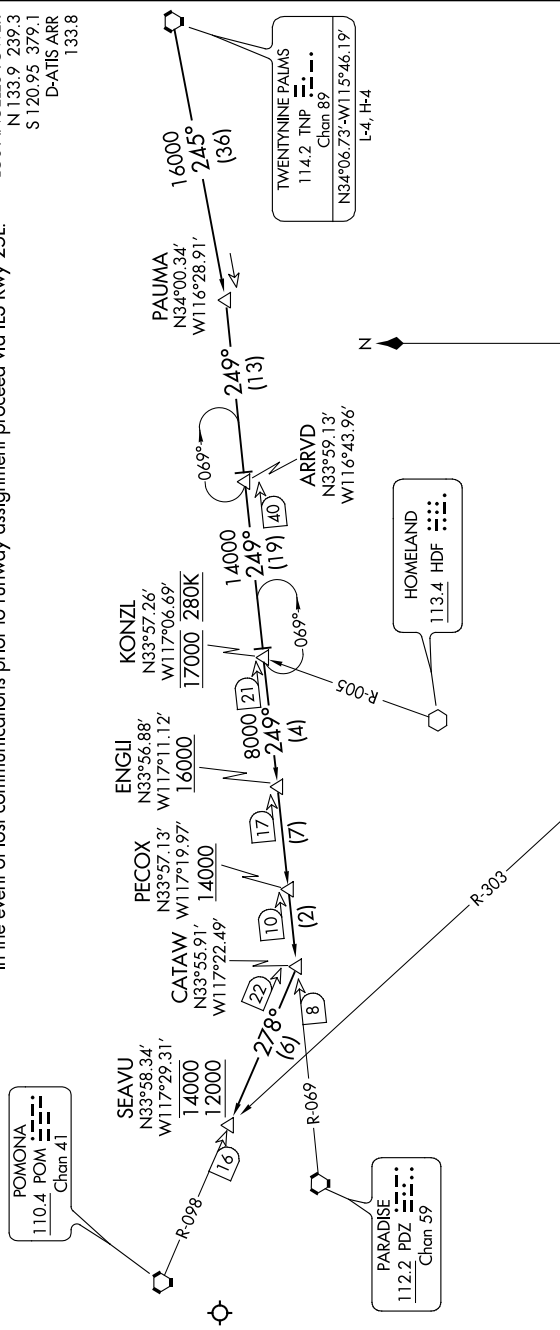
AL-237 (FAA)

LOS ANGELES INTL (LAX)
LOS ANGELES, CALIFORNIA

SW-3, 25 FEB 2021 to 25 MAR 2021

SOCAL APP CON
124.05 353.775
LOS ANGELES TOWER
N 133.9 239.3
S 120.95 379.1
D-ATIS ARR
133.8

NOTE: Expect runway assignment on initial contact with Southern California TRACON.
In the event of lost communications prior to runway assignment proceed via ILS Rwy 25L.



NOTE: Chart not to scale.

ARRIVAL ROUTE DESCRIPTION

TWENTYNINE PALMS TRANSITION (TNP.SEAVU2):
From over TNP VORTAC on TNP R-245 and PDZ R-069 to CATAW, then on POM R-098 to SEAVU.

LOST COMMUNICATIONS: In the event of lost communication prior to runway assignment proceed via ILS Rwy 25L.

NOTE: DME or RADAR required.

SEAVU TWO ARRIVAL

LOS ANGELES, CALIFORNIA
LOS ANGELES INTL (LAX)

SW-3, 25 FEB 2021 to 25 MAR 2021