

LOC I-LCK 110.1	APP CRS 232°	Rwy Idg	23L	23R
		THRE	12102	10913
		Apt Elev	739	741
			744	744

ILS or LOC RWY 23L



COLUMBUS / RICKENBACKER INTL (LCK)

⚠ Circling NA northwest of Rwy 5L-23R. When local altimeter setting not received, use Port Columbus Intl altimeter setting and increase all DA 36 feet and all MDA 40 feet, increase S-LOC 23L visibility Cat C and D to RVR 5500.

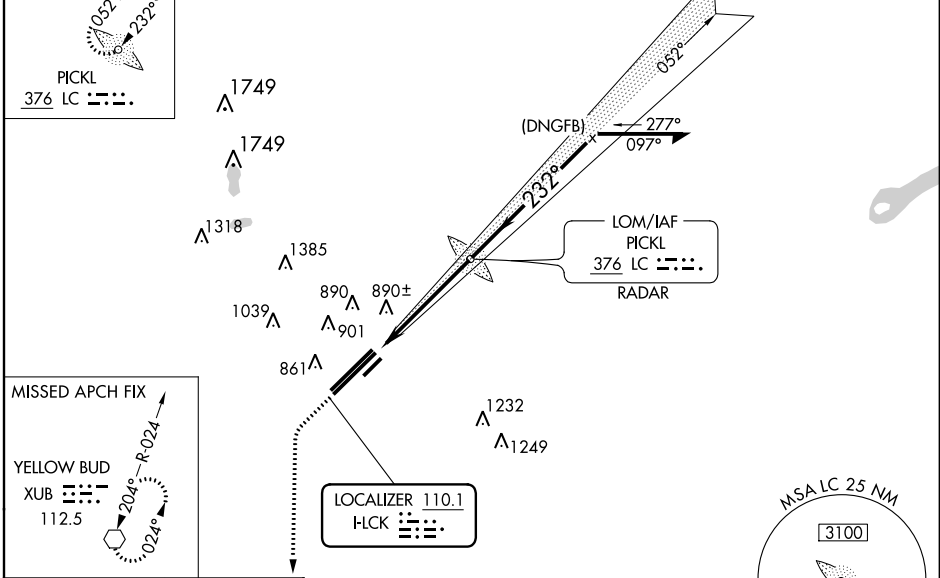
MALSR

 MISSED APPROACH: Climb to 3000, then left turn direct XUB VOR and hold.

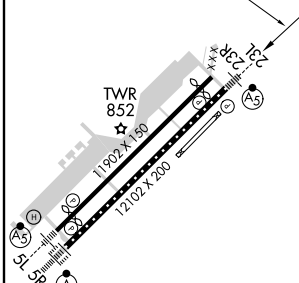
AWOS-3 132.75	COLUMBUS APP CON 119.15 279.6	RICK TOWER 120.05 348.4	GND CON 121.85 275.8
-------------------------	---	-----------------------------------	--------------------------------

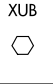
ALTERNATE MISSED APCH FIX

 PICKL
 376 LC 

RADAR REQUIRED



ELEV 744	D	THRE 23L 739
		THRE 23R 741
232° 4.9 NM from FAF		



3000

 LOM RADAR
 2372
 052°
 2900
 232°
 2400
 GS 3.00°
 TCH 62
 4.9 NM
 Remain within 10 NM

VGSI and ILS glidepath not coincident (VGSI Angle 3.00/TCH 73).

CATEGORY	A	B	C	D
S-ILS 23L	939/24 200 (200-½)			
S-LOC 23L	1220/24	481 (500-½)	1220/50	481 (500-1)
SIDESTEP RWY 23R	1220-1	479 (500-1)	1220-1½ 479 (500-1½)	1220-2 479 (500-2)
CIRCLING	1220-1	476 (500-1)	1220-1½ 476 (500-1½)	1300-2 556 (600-2)

TDZ/CL Rwy 5R
 REIL Rwy 23R
 HIRL Rwy 5L-23R and 5R-23L

FAF to MAP 4.9 NM

Knots	60	90	120	150	180
Min:Sec	4:54	3:16	2:27	1:58	1:38

EC-2, 26 JUN 2014 to 24 JUL 2014

EC-2, 26 JUN 2014 to 24 JUL 2014