

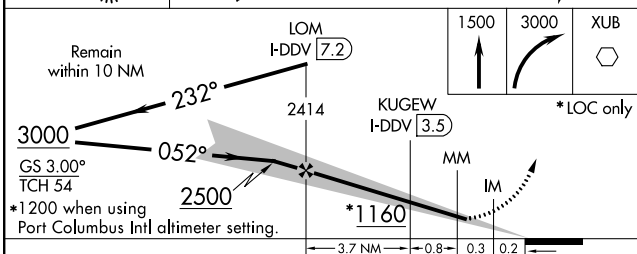
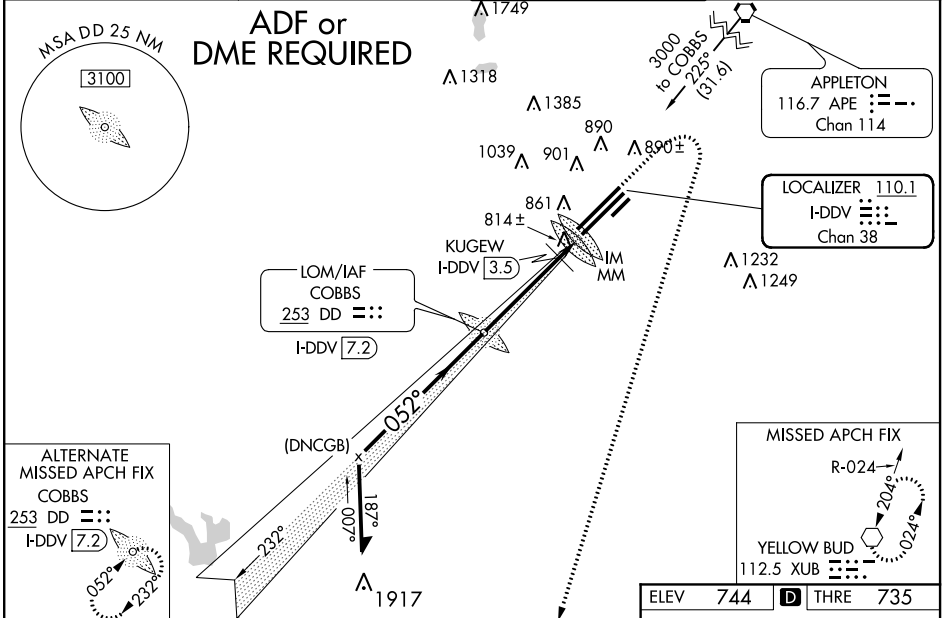
LOC/DME I-DDV <b>110.1</b> Chan <b>38</b>	APP CRS <b>052°</b>	Rwy Idg <b>12102</b> THRE <b>735</b> Apt Elev <b>744</b>
-------------------------------------------------	------------------------	----------------------------------------------------------------

**ILS or LOC RWY 5R**  
COLUMBUS / RICKENBACKER INTL (LCK)

**▲** Circling NA northwest of Rwy 05L-23R. When local altimeter setting not received, use Port Columbus Intl altimeter setting and increase all DA 36 feet and all MDA 40 feet. Increase S-ILS 5R all Cats visibility to RVR 2400, S-LOC 5R Cat C/D visibility to RVR 5000, and KUGEW FIX minimums S-LOC 5R Cat C/D visibility to RVR 3500. For inoperative ALSF-2 when using Port Columbus Intl altimeter setting, increase S-LOC 5R visibility Cats C/D to 1½. KUGEW FIX minimums: for inoperative ALSF-2 when using Port Columbus Intl altimeter setting increase S-LOC 5R Cats C/D visibility to RVR 6000.

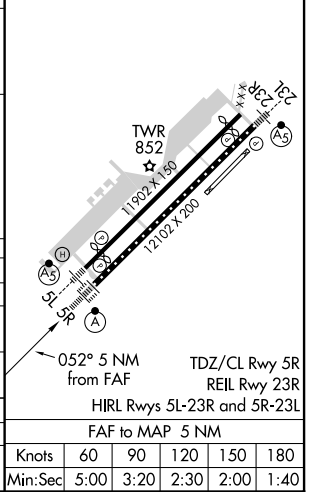
**ALSF-2**  
**MISSED APPROACH:**  
Climb to 1500 then climbing right turn to 3000 direct XUB VOR and hold.

AWOS-3 <b>132.75</b>	COLUMBUS APP CON <b>119.15 279.6</b>	<b>RICK TOWER</b> <b>120.05 348.4</b>	<b>GND CON</b> <b>121.85 275.8</b>
-------------------------	-----------------------------------------	------------------------------------------	---------------------------------------



ELEV 744	<b>D</b> THRE 735
----------	-------------------

CATEGORY	A	B	C	D
S-ILS 5R	935/18		200 (200-½)	
S-LOC 5R	1160/24	425 (500-½)	1160/40	425 (500-¾)
CIRCLING	1180-1 436 (500-1)	1200-1 456 (500-1)	1200-1½ 456 (500-1½)	1300-2 556 (600-2)
KUGEW FIX MINIMUMS				
S-LOC 5R	1080/24	345 (400-½)	1080/30	345 (400-¾)
CIRCLING	1180-1 436 (500-1)	1200-1 456 (500-1)	1200-1½ 456 (500-1½)	1300-2 556 (600-2)



EC-2, 26 JUN 2014 to 24 JUL 2014

EC-2, 26 JUN 2014 to 24 JUL 2014