

LOM LC <b>376</b>	APP CRS <b>233°</b>	Rwy Idg THRE Apt Elev	<b>12102</b> <b>739</b> <b>744</b>
----------------------	------------------------	-----------------------------	------------------------------------------

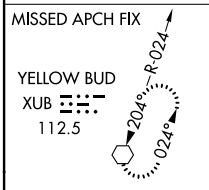
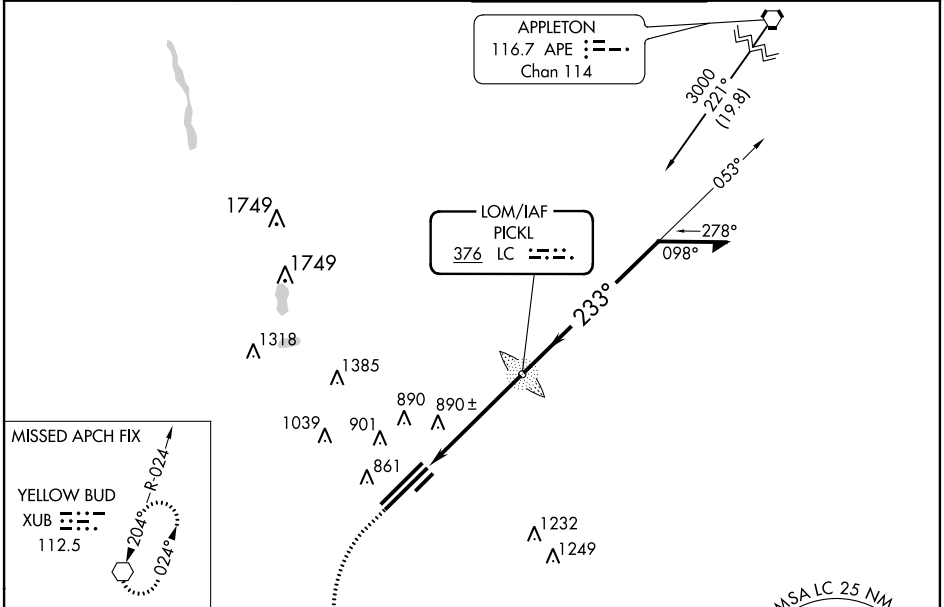
# NDB RWY 23L

COLUMBUS / RICKENBACKER INTL (LCK)

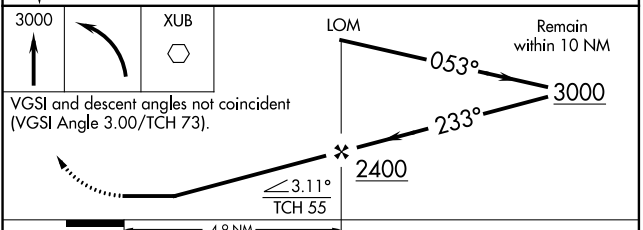
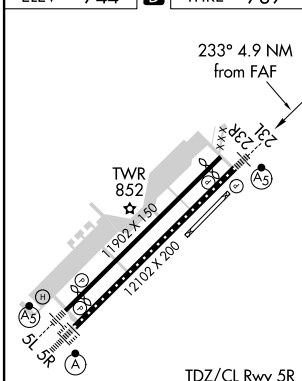
**NA** Circling NA northwest of Rwy 5L-23R. When local altimeter setting not received, use Port Columbus Intl altimeter setting and increase all MDA 40 feet, and increase S-23L Cat C/D visibility to 1 $\frac{3}{4}$ . For inoperative MALSR, increase S-23L Cat D visibility to 1 $\frac{1}{2}$  mile. When using Port Columbus altimeter setting, increase S-23L Cat C/D visibility to 1 $\frac{1}{4}$  mile.

**MALSR** MISSED APPROACH: Climb to 3000 then left turn direct XUB VOR and hold.

AWOS-3 <b>132.75</b>	COLUMBUS APP CON <b>119.15 279.6</b>	RICK TOWER <b>120.05 348.4</b>	GND CON <b>121.85 275.8</b>
-------------------------	-----------------------------------------	-----------------------------------	--------------------------------



ELEV 744	<b>D</b>	THRE 739
----------	----------	----------



CATEGORY	A	B	C	D
S-23L	1280/40 541 (600- $\frac{3}{4}$ )		1280/60 541 (600-1 $\frac{1}{4}$ )	
CIRCLING	1280-1 536 (600-1)		1280-1 $\frac{5}{8}$ 536 (600-1 $\frac{1}{2}$ )	1300-2 556 (600-2)

FAF to MAP 4.9 NM					
Knots	60	90	120	150	180
Min:Sec	4:54	3:16	2:27	1:58	1:38

EC-2, 26 JUN 2014 to 24 JUL 2014

EC-2, 26 JUN 2014 to 24 JUL 2014