

LOM DD <b>253</b>	APP CRS <b>053°</b>	Rwy Idg <b>12102</b>
		THRE <b>735</b>
		Apt Elev <b>744</b>

# NDB RWY 5R

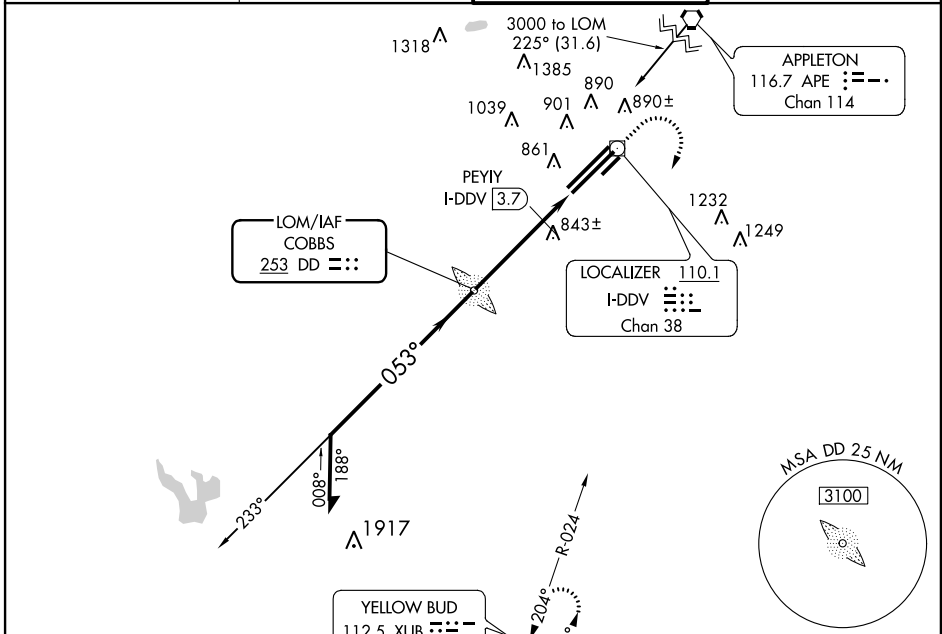
COLUMBUS / RICKENBACKER INTL (LCK)

**NA** Inoperative table does not apply. When local altimeter setting not received, use Port Columbus Intl altimeter setting and increase all MDA 40 feet, increase S-5R Cat C/D visibility to RVR 6000 and PEYIY Fix minimums S-5R Cat C/D visibility to RVR 5000. Circling NA northwest of Rwy 5L-23R.

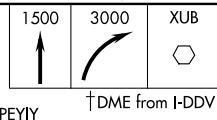


**MISSED APPROACH:** Climb to 1500 then climbing right turn to 3000 direct XUB VOR and hold.

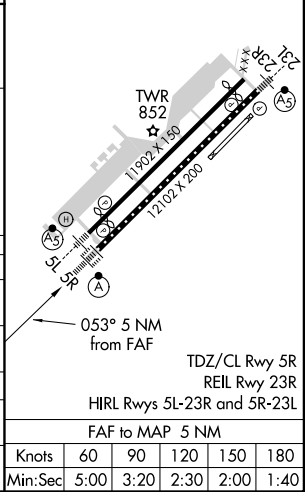
AWOS-3 <b>132.75</b>	COLUMBUS APP CON <b>119.15 279.6</b>	RICK TOWER <b>120.05 348.4</b>	GND CON <b>121.85 275.8</b>
-------------------------	---	-----------------------------------	--------------------------------



\*1280 when using Port Columbus altimeter setting. Remain within 10 NM LOM. 3000, 233°, 053°, 2500, 3.20° TCH 55, \*1240, 1.5 NM, 3.5 NM.



ELEV 744	<b>D</b> THRE 735
----------	-------------------



CATEGORY	A	B	C	D
S-5R	1240/40	505 (500-¾)	1240/55	505 (500-1¼)
CIRCLING	1240-1	496 (500-1)	1240-1½	1300-2 496 (500-1½) 556 (600-2)
*PEYIY FIX MINIMUMS				
S-5R	1160/40		425 (500-¾)	
CIRCLING	1180-1 436 (500-1)	1200-1 456 (500-1)	1200-1½ 456 (500-1½)	1300-2 556 (600-2)

Knots	60	90	120	150	180
Min:Sec	5:00	3:20	2:30	2:00	1:40

EC-2, 26 JUN 2014 to 24 JUL 2014

EC-2, 26 JUN 2014 to 24 JUL 2014