


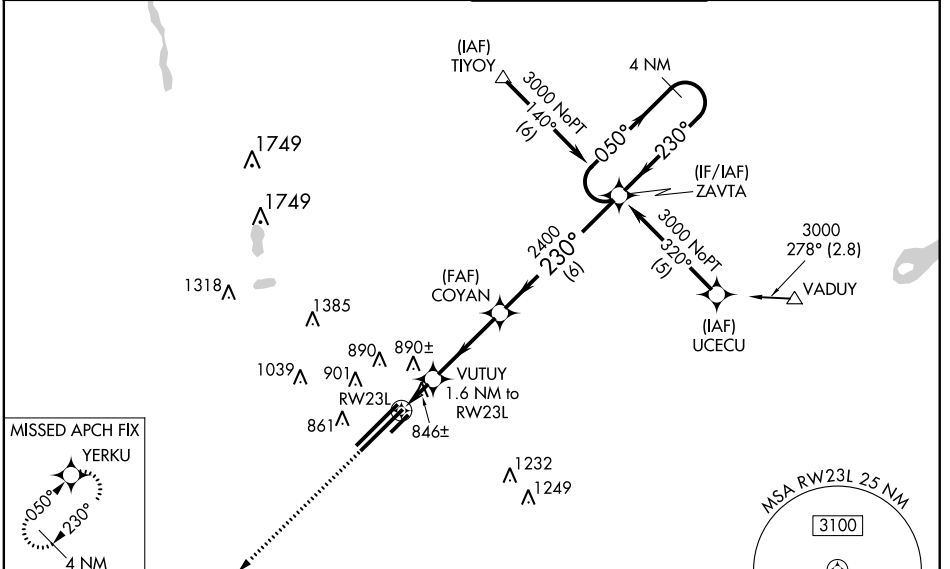
WAAS CH <b>62811</b> <b>W23A</b>	APP CRS <b>230°</b>	Rwy Idg <b>12102</b> TDZE <b>739</b> Apt Elev <b>744</b>
--	------------------------	--

# RNAV (GPS) RWY 23L

COLUMBUS / RICKENBACKER INTL (LCK)

<p><b>⚠</b> Circling NA NW of Rwy 5L-23R. Baro-VNAV NA when using Port Columbus Intl altimeter setting. For uncompensated Baro-VNAV systems, LNAV/VNAV NA below -16°C (4°F) or above 47°C (116°F). DME/DME RNP-0.3 NA. When local altimeter setting not received, use Port Columbus Intl altimeter setting and increase all DA 36 feet and LNAV/VNAV all Cats visibility to RVR 5000, increase all MDA 40 feet.</p>	<p>MALSR</p> 	<p>MISSED APPROACH: Climb to 3000 direct YERKU and hold.</p>

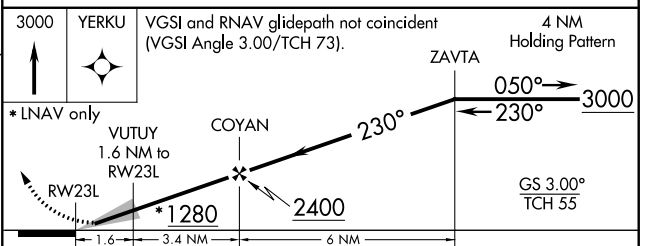
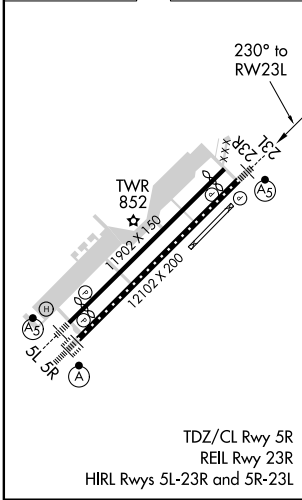
AWOS-3 <b>132.75</b>	COLUMBUS APP CON <b>119.15 279.6</b>	RICK TOWER <b>120.05 348.4</b>	GND CON <b>121.85 275.8</b>
-------------------------	---	-----------------------------------	--------------------------------



EC-2, 26 JUN 2014 to 24 JUL 2014

EC-2, 26 JUN 2014 to 24 JUL 2014

ELEV <b>744</b>	<b>D</b>	TDZE <b>739</b>
-----------------	----------	-----------------



<p>3000 YERKU</p> <p>↑</p> <p>* LNAV only</p> <p>VUTUY 1.6 NM to RWY 23L</p> <p>COYAN</p> <p>RWY 23L</p> <p>* 1280</p> <p>2400</p> <p>1.6 3.4 NM 6 NM</p>	<p>VGSI and RNAV glidepath not coincident (VGSI Angle 3.00/TCH 73).</p> <p>4 NM Holding Pattern</p> <p>ZAVTA</p> <p>050° →</p> <p>← 230°</p> <p>3000</p> <p>GS 3.00° TCH 55</p>			
CATEGORY	A	B	C	D
LPV DA		939/24	200 (200-½)	
LNAV/VNAV DA		1121/40	382 (400-¾)	
LNAV MDA	1180/24	441 (500-½)	1180/40 441 (500-¾)	1180/50 441 (500-1)
CIRCLING	1180-1 436 (500-1)	1200-1 456 (500-1)	1200-1½ 456 (500-1½)	1300-2 556 (600-2)