

WAAS CH 78421 W23B	APP CRS 230°	Rwy Idg THRE 741 Apt Elev 744
--	------------------------	---

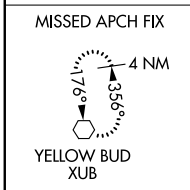
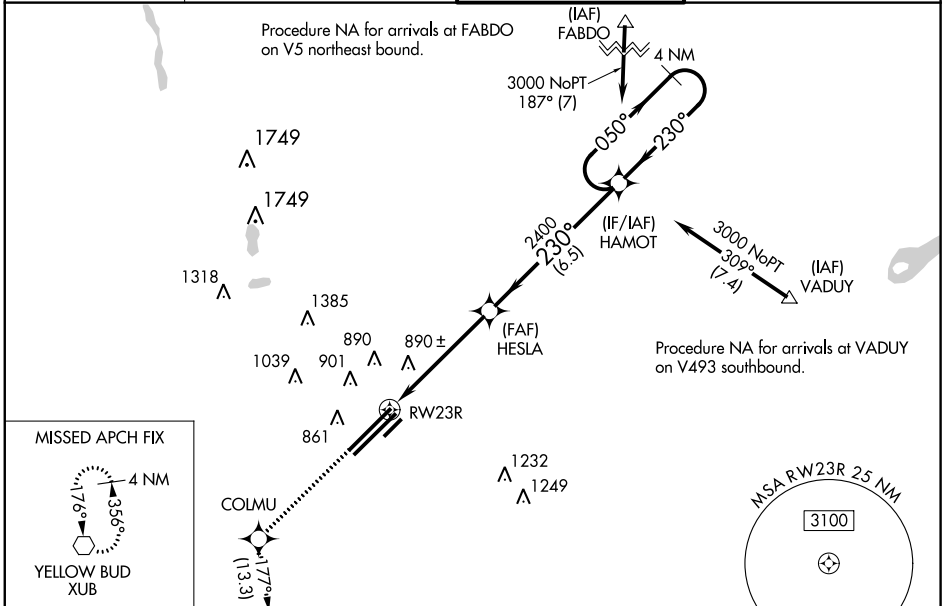
RNAV (GPS) RWY 23R

COLUMBUS / RICKENBACKER INTL (LCK)

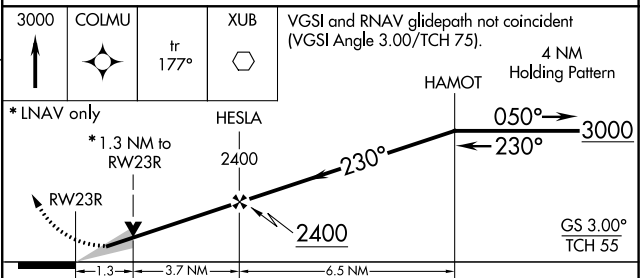
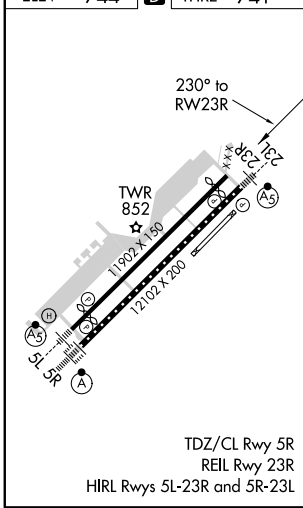
▲ Baro-VNAV NA when using Port Columbus Intl altimeter setting. For uncompensated Baro-VNAV systems, LNAV/VNAV NA below -16°C (4°F) or above 39°C (102°F). Circling NA northwest of Rwy 5L-23R. DME/DME RNP-0.3 NA. VDP NA with Port Columbus Intl altimeter setting. When local altimeter setting not received, use Port Columbus Intl altimeter setting and increase all DA 36 feet and all MDA 40 feet. Increase LNAV/VNAV visibility 1/8 mile all Cats.

MISSED APPROACH: Climb to 3000 direct COLMU and on track 177° to XUB VOR and hold.

AWOS-3 132.75	COLUMBUS APP CON 119.15 279.6	RICK TOWER 120.05 348.4	GND CON 121.85 275.8
-------------------------	---	-----------------------------------	--------------------------------



ELEV 744	D	THRE 741
-----------------	----------	-----------------



CATEGORY	A	B	C	D
LPV DA		941-3/4	200 (200-3/4)	
LNAV/VNAV DA		991-3/4	250 (300-3/4)	
LNAV MDA	1220-1	479 (500-1)	1220-1 3/8	479 (500-1 3/8)
CIRCLING	1220-1	476 (500-1)	1220-1 1/2	1300-1 1/2
			476 (500-1 1/2)	556 (600-1 1/2)

EC-2, 26 JUN 2014 to 24 JUL 2014

EC-2, 26 JUN 2014 to 24 JUL 2014