

WAAS CH 78022 W05B	APP CRS 050°	Rwy Idg 11004 THRE 742 Apt Elev 744
--	------------------------	--

RNAV (GPS) RWY 5L

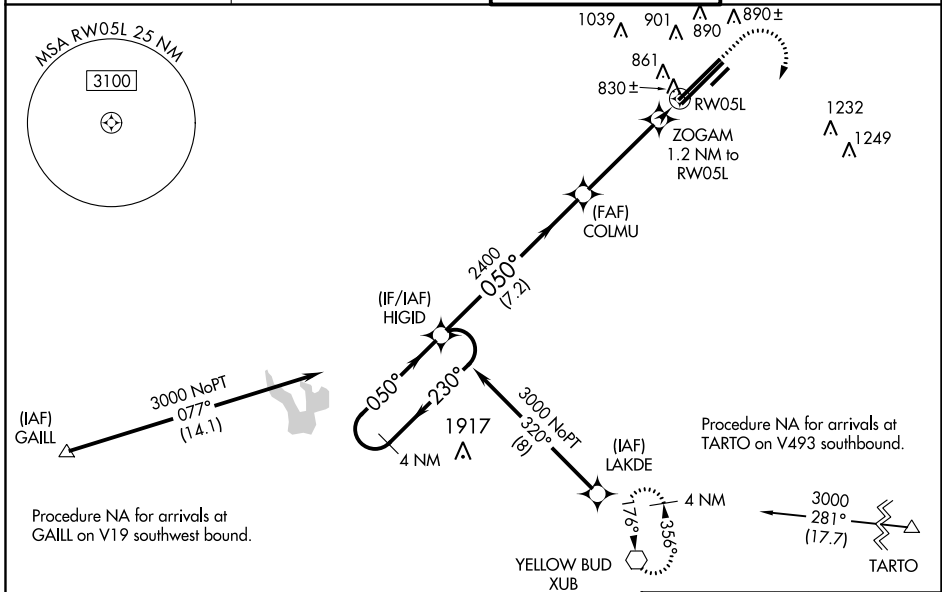
COLUMBUS / RICKENBACKER INTL (LCK)

▲ Baro-VNAV NA when using Port Columbus Intl altimeter setting. For uncompensated Baro-VNAV systems, LNAV/VNAV NA below -16°C (4°F) or above 39°C (102°F). For inoperative MALSRL, increase LNAV/VNAV all Cats visibility to ¾ mile. Circling NA northwest of Rwy 5L-23R. DME/DME RNP-0.3 NA. When local altimeter setting not received, use Port Columbus Intl altimeter setting and increase all DA 36 feet, and all MDA 40 feet. Increase LNAV Cat C and D visibility ½ mile.



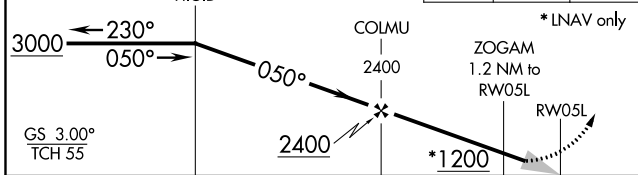
MISSED APPROACH: Climb to 1500 then climbing right turn to 3000 direct XUB VOR and hold.

AWOS-3 132.75	COLUMBUS APP CON 119.15 279.6	RICK TOWER 120.05 348.4	GND CON 121.85 275.8
-------------------------	---	-----------------------------------	--------------------------------

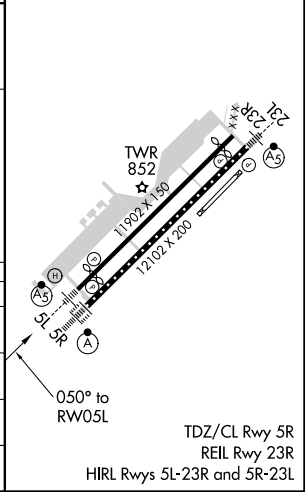


ELEV 744	D	THRE 742
----------	----------	----------

VGSI and RNAV glidepath not coincident (VGSI Angle 3.00/TCH 70).
4 NM Holding Pattern



CATEGORY	A	B	C	D
LPV DA		942-½	200 (200-½)	
LNAV/VNAV DA		992-½	250 (300-½)	
LNAV MDA		1080-½	338 (400-½)	
CIRCLING	1180-1 436 (500-1)	1200-1 456 (500-1)	1200-1½ 456 (500-1½)	1300-2 556 (600-2)



EC-2, 26 JUN 2014 to 24 JUL 2014

EC-2, 26 JUN 2014 to 24 JUL 2014

RNAV (GPS) RWY 5L