

WAAS CH 78410 W05A	APP CRS 050°	Rwy Idg 12102 THRE 735 Apt Elev 744
--	------------------------	--

RNAV (GPS) RWY 5R

COLUMBUS / RICKENBACKER INTL (LCK)

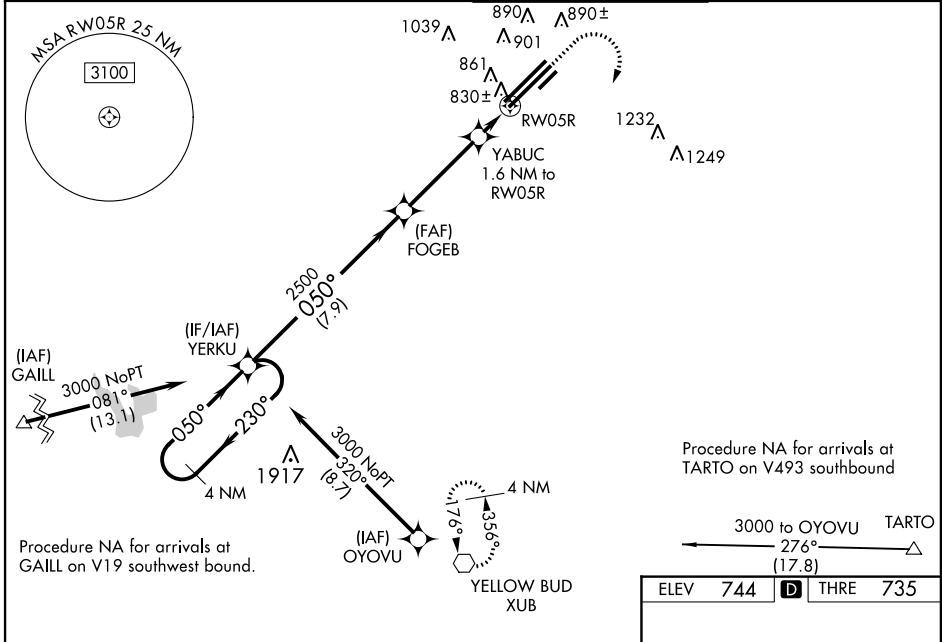
⚠ Baro-VNAV NA when using Port Columbus Intl altimeter setting. For uncompensated Baro-VNAV systems, LNAV/VNAV NA below -1.6°C (4°F) or above 39°C (102°F). Circling NA northwest of Rwy 5L-23R. DME/DME RNP-0.3 NA. VDP NA with Port Columbus Intl altimeter setting. When local altimeter setting not received, use Port Columbus Intl altimeter setting and increase all DA 36 feet, and all MDA 40 feet. Increase LNAV Cat C and D visibility to RVR 4000. For inop ALSF when using Port Columbus Intl altimeter setting, increase LNAV/VNAV visibility to 1 mile all Cats.

ALSF-2



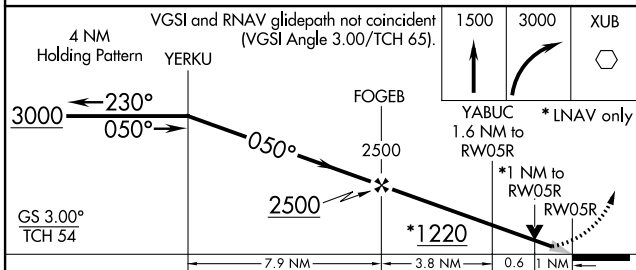
MISSED APPROACH: Climb to 1500 then climbing right turn to 3000 direct XUB VOR and hold.

AWOS-3 132.75	COLUMBUS APP CON 119.15 279.6	RICK TOWER 120.05 348.4	GND CON 121.85 275.8
-------------------------	---	-----------------------------------	--------------------------------

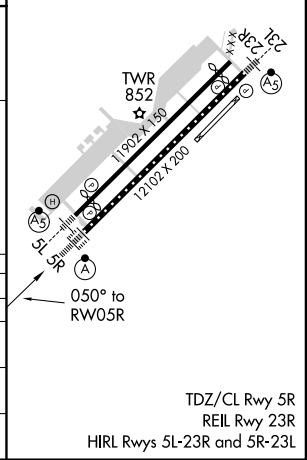


EC-2, 26 JUN 2014 to 24 JUL 2014

EC-2, 26 JUN 2014 to 24 JUL 2014



ELEV 744	THRE 735
----------	----------



CATEGORY	A	B	C	D
LPV DA		935/24	200 (200-1/2)	
LNAV/VNAV DA		1011/24	276 (300-1/2)	
LNAV MDA	1120/24	385 (400-1/2)	1120/35	385 (400-3/4)
CIRCLING	1180-1 436 (500-1)	1200-1 456 (500-1)	1200-1 1/2 456 (500-1 1/2)	1300-2 556 (600-2)