

ANAHEIM ONE DEPARTURE

AL-236 (FAA)

LONG BEACH/DAUGHERTY FIELD (LGB)

LONG BEACH, CALIFORNIA

SW-3, 25 FEB 2021 to 25 MAR 2021

TOP ALTITUDE: ASSIGNED BY ATC

TAKEOFF MINIMUMS

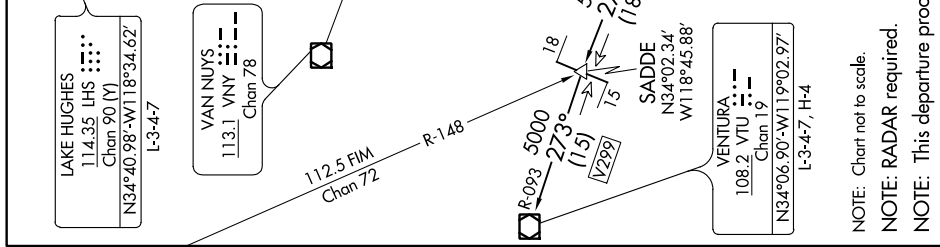
Rwys 8L/R, 12, 30: Standard.

Rwy 26L: Standard with minimum climb of 225' per NM to 2300.

Rwy 26R: Standard with minimum climb of 230' per NM to 2300.

125.35 316.125 (Rwys 8L/R, 12) HECTOR OR LAKE HUGHES TRANSITIONS
125.35 316.125 (Rwys 8L/R, 12) VENTURA TRANSITION
127.2 269.6 (Rwys 26L/R, 30) HECTOR OR LAKE HUGHES TRANSITIONS
134.9 360.7 (Rwys 26L/R, 30) VENTURA TRANSITION

ATIS 127.75
CLNC DEL 118.15
GND CON 133.0 257.6
SOCAL DEP CON



(NARRATIVE ON FOLLOWING PAGE)

NOTE: Chart not to scale.
 NOTE: RADAR required.
 NOTE: This departure procedure not authorized for turbo-prop or turbo-jet aircraft.

ANAHEIM ONE DEPARTURE

LONG BEACH, CALIFORNIA

LONG BEACH/DAUGHERTY FIELD (LGB)

SW-3, 25 FEB 2021 to 25 MAR 2021