

LAS VEGAS, NEVADA

LOC Y RWY 21L

LOC I-DIQ 109.1	APCH CRS 209°	Rwy Idg 21L 10,051 TDZE 1865 Arprt Elev 1869	Rwy Idg 21R 10,120 TDZE 1869
---------------------------	-------------------------	---	--

AL-227 [USAF]

NELLIS AFB (KLSV)

RADAR or DME required.



† MISSED APPROACH: Climb to 8000, intercept the LAS VORTAC R-018 to 10.3 DME (IREEN), then to LAS and hold.

- * When ALS inop, increase vis to 1 1/2 miles.
- ** Circling not authorized E of Rwy 3R-21L.

ATIS 270.1	NELLIS APP CON 124.95 273.55	TOWER 132.55 327.0	GND CON 121.8 275.8	CLNC DEL 120.9 289.4
----------------------	--	------------------------------	-------------------------------	--------------------------------

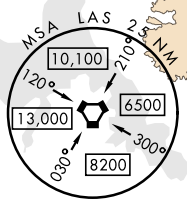
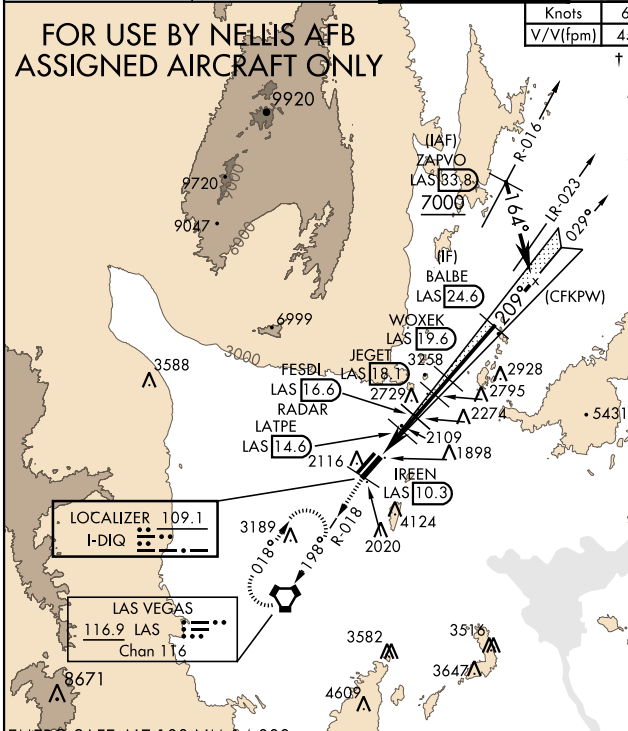
FOR USE BY NELLIS AFB ASSIGNED AIRCRAFT ONLY

Knots	60	120	180	240	300	360
V/V(fpm)	450	900	1350	1800	2250	2700

† ATC climb of 450 ft/NM to 8000

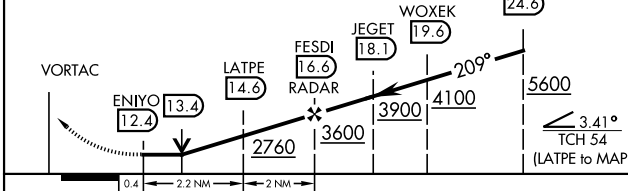
Missed approach requires use of RNAV or ATC RADAR monitoring.

LAS VEGAS VORTAC DME not usable for missed approach holding.

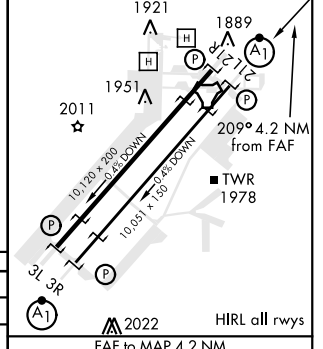


EMERG SAFE ALT 100 NM 14,000

8000 LAS R-018 IREEN 10.3 LAS VORTAC VGSI and descent angles not coincident (VGSI Angle 3.00/TCH 54).



ELEV 1869	TDZE 21L 1865
	TDZE 21R 1869



CATEGORY	C	D	E
S-21L *	2360/50	495 (500-1)	
SIDESTEP 21R	2380-1 3/8	511 (600-1 3/8)	
CIRCLING **	2620-2 1/4 751 (800-2 1/4)	2840-3 971 (1000-3)	3040-3 1171 (1200-3)

FAF to MAP 4.2 NM					
Knots	60	90	120	150	180
Min:Sec	4:12	2:48	2:06	1:41	1:24

LAS VEGAS, NEVADA

36°14'N-115°02'W

NELLIS AFB (KLSV)

Amdt 7 03JAN19

LOC Y RWY 21L

SW-4, 25 FEB 2021 to 25 MAR 2021

SW-4, 25 FEB 2021 to 25 MAR 2021