

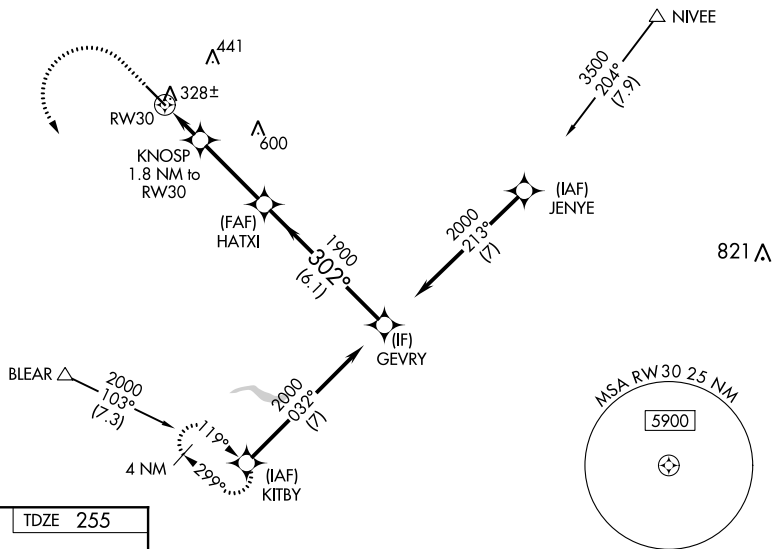
WAAS CH 90209 W30A	APP CRS 302°	Rwy Idg TDZE Apt Elev	5545 255 255
--	------------------------	-----------------------------	---

RNAV (GPS) RWY 30

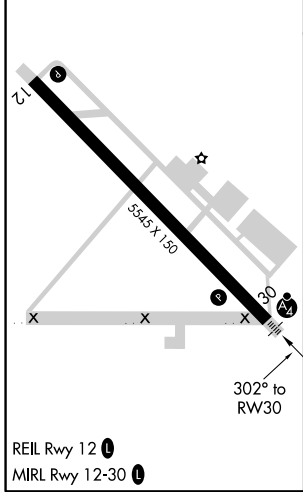
MADERA MUNI (MAE)

RNP APCH.	MALSF	MISSED APPROACH: Climb to 800 then climbing left turn to 2000 to KITBY and hold.
<p>▼ For uncompensated Baro-VNAV systems, LNAV/VNAV NA below -3°C or above 54°C. Inop table does not apply to LPV and LNAV/VNAV Cat A/B/C.</p>		

ASOS 134.725	FRESNO APP CON 119.45	CLNC DEL 119.45	UNICOM 122.8 (CTAF)
------------------------	---------------------------------	---------------------------	-------------------------------



ELEV 255	TDZE 255
----------	----------



800	2000	KITBY	VGSI and RNAV glidepath not coincident (VGSI Angle 3.00/TCH 34).	
*LNAV only		KNOSP 1.8 NM to RW30	HATXI 1900	GEVRY 2000
1.1 NM to RW30		RW30	860	GP 3.00° TCH 35
1.1 NM		0.7 NM	3.3 NM	6.1 NM
CATEGORY	A	B	C	D
LPV DA	505-¾ 250 (300-¾)			NA
LNAV/VNAV DA	505-¾ 250 (300-¾)			NA
LNAV MDA	640-¾	385 (400-¾)	640-⅞ 385 (400-⅞)	NA
CIRCLING	680-1 425 (500-1)	720-1 465 (500-1)	740-1½ 485 (500-1½)	NA

SW-2, 25 FEB 2021 to 25 MAR 2021

SW-2, 25 FEB 2021 to 25 MAR 2021