


LOC I-MCC 109.7	APP CRS 163°	Rwy Idg 10599 TDZE 77 Apt Elev 77
---------------------------	------------------------	--

ILS or LOC RWY 16

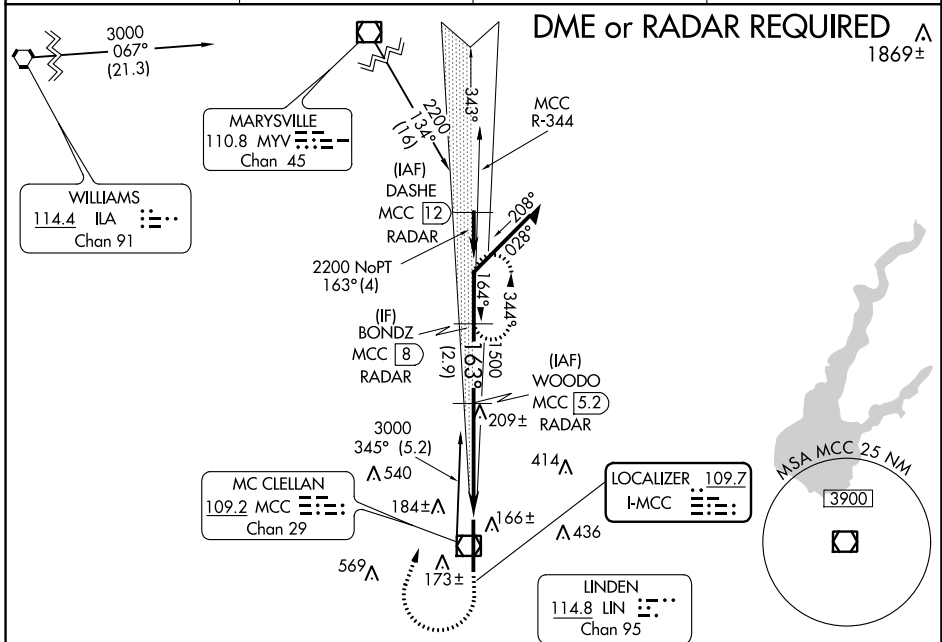
MC CLELLAN AIRFIELD (MCC)

NA DME from MCC VOR/DME. If local altimeter setting is not received, use Sacramento Intl altimeter setting and increase all DH/MDAs 40 feet.

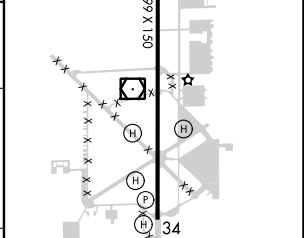
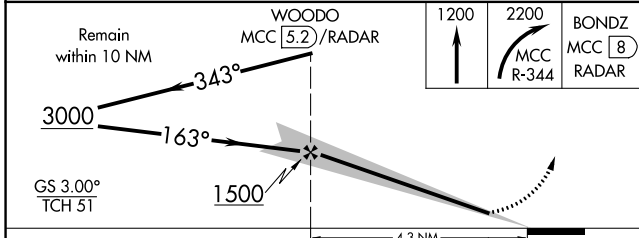
SSALR 

MISSED APPROACH: Climb to 1200 then climbing right turn to 2200 via MCC VOR/DME R-344 to BONDZ/MCC 8 DME/RADAR and hold.

AWOS-3 125.975	NORCAL APP CON 127.4 317.5	CINC DEL 119.825	UNICOM 122.975 (CTAF) 
--------------------------	--------------------------------------	----------------------------	---



ELEV 77	TDZE 77
---------	---------



CATEGORY	A	B	C	D
S-ILS 16		277- $\frac{1}{2}$	200 (200- $\frac{1}{2}$)	
S-LOC 16		460- $\frac{1}{2}$	383 (400- $\frac{1}{2}$)	460- $\frac{3}{4}$ 383 (400- $\frac{3}{4}$)
CIRCLING		NA		

FAF to MAP 4.3 NM					
Knots	60	90	120	150	180
Min:Sec	4:18	2:52	2:09	1:43	1:26

SW-2, 25 FEB 2021 to 25 MAR 2021

SW-2, 25 FEB 2021 to 25 MAR 2021