

WAAS CH <b>90423</b> <b>W05A</b>	APP CRS <b>054°</b>	Rwy Idg TDZE <b>216</b> Apt Elev <b>216</b>	<b>6502</b>
--	------------------------	---	-------------

# RNAV (GPS) RWY 5

LAURINBURG-MAXTON (MEB)

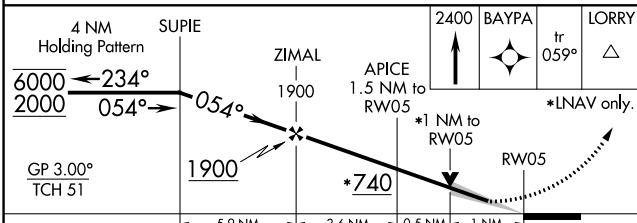
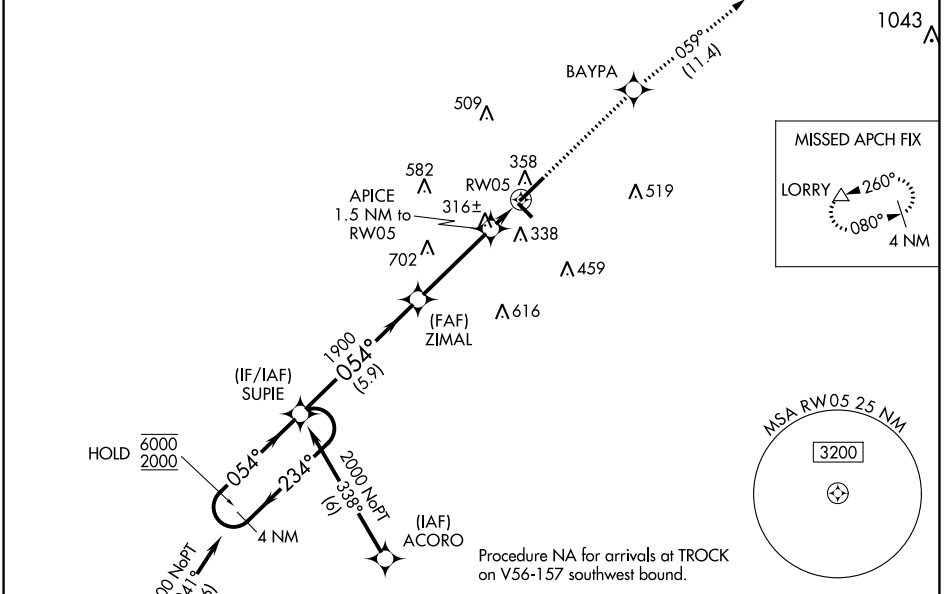
RNP APCH.

**⚠** Circling to Rwy 13 and 31 NA at night. For uncompensated Baro-VNAV systems, LNAV/VNAV NA below -1.5°C or above 42°C. For inop ALS, increase LNAV/VNAV all cats visibility to ¾ SM, and LNAV Cat C/D visibility to 1 SM.

MALS R

**⚠** MISSED APPROACH: Climb to 2400 direct BAYPA and on track 059° to LORRY and hold.

ASOS <b>134.125</b>	FAYETTEVILLE APP CON <b>127.8 343.725</b>	GCO <b>135.075</b>	UNICOM <b>122.8 (CTAF) 0</b>
------------------------	--	-----------------------	---------------------------------



ELEV 216	TDZE 216
----------	----------

HIRL Rwy 5-23 0

CATEGORY	A	B	C	D
LPV DA		416-½	200 (200-½)	
LNAV/VNAV DA		472-½	256 (300-½)	
LNAV MDA	580-½	364 (400-½)	580-5/8	364 (400-5/8)
CIRCLING	740-1	524 (600-1)	780-1½ 564 (600-1½)	1020-2½ 804 (900-2½)

SE-2, 25 FEB 2021 to 25 MAR 2021

SE-2, 25 FEB 2021 to 25 MAR 2021