

LOC/DME I-MHR 111.35 Chan 50(Y)	APP CRS 221°	Rwy Idg 11301 TDZE 98 Apt Elev 98
--	------------------------	--

ILS RWY 22L (SA CAT I & II)

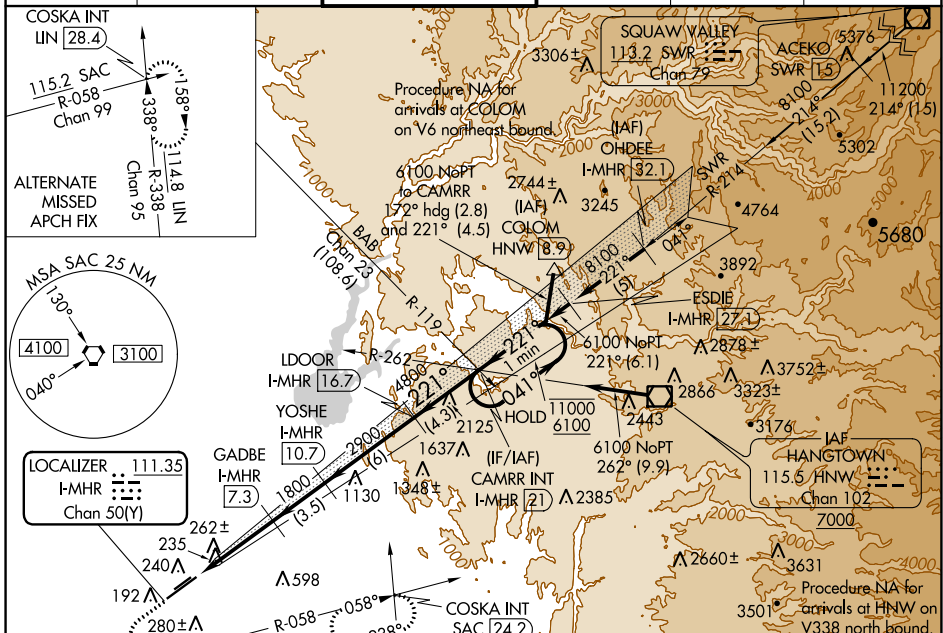
SACRAMENTO MATHER (MHR)

SA CAT I: Requires specific OPSPEC, MSPEC, or LOA approval and use of HUD to DH.
SA CAT II: Reduced lighting; requires specific OPSPEC, MSPEC, or LOA approval and use of autoland or HUD to touchdown.
 Procedure NA when tower closed.

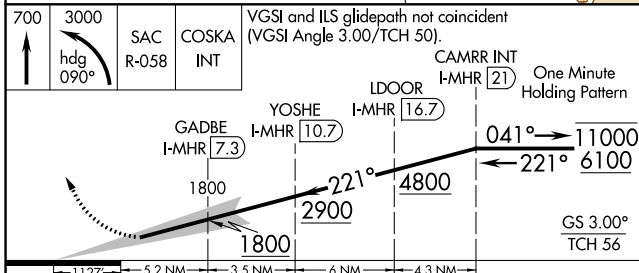


MALSR MISSED APPROACH: Climb to 700 then climbing left turn to 3000 on heading 090° and SAC VORTAC R-058 to COSKA INT/SAC 24.2 DME and hold.

ATIS 118.325	NORCAL APP CON 127.4 317.5	MATHER TOWER ★ 120.65 (CTAF) 282.25	GND CON 121.85 307.9	CLNC DEL 121.85 307.9	UNICOM 122.95
------------------------	--------------------------------------	---	--------------------------------	---------------------------------	-------------------------

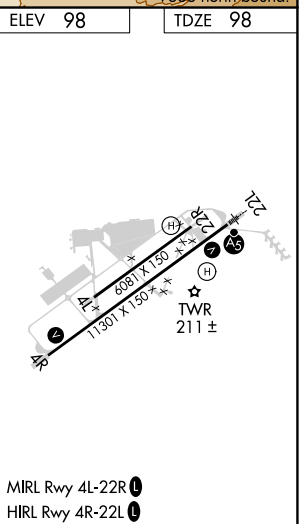


ELEV 98	TDZE 98
---------	---------



CATEGORY	A	B	C	D
S-ILS 22L	SA CAT I	RA 136/14	150	DA 248
S-ILS 22L	SA CAT II	RA 95/12	100	DA 198

SA CATEGORY I & II ILS - SPECIAL AIRCREW & AIRCRAFT CERTIFICATION REQUIRED



MIRL Rwy 4L-22R
 HIRL Rwy 4R-22L

SW-2, 25 FEB 2021 to 25 MAR 2021

SW-2, 25 FEB 2021 to 25 MAR 2021