

AGUDE FIVE ARRIVAL

AL-263 (FAA)

MINNEAPOLIS-ST PAUL, MINNESOTA

NC-1, 25 FEB 2021 to 25 MAR 2021

NOTE: Chart not to scale.

NOTE: DME and RADAR required.

MINNEAPOLIS APP CON
 121.2 335.5
 ANE ATIS
 120.625
 FCM ATIS
 124.9
 MIC ATIS
 124.475
 STP ATIS
 118.35

AGUDE
 N45°07.76'-W92°23.52'
VERTICAL NAVIGATION
PLANNING INFORMATION
 Turbojets: Expect 8000
 Turboprops: Expect 6000

GOPHER
 117.3 GEP
 Chan 120
 (N45°08.74'-W93°22.39')

MAPLE LAKE MUNI-BILL
 MAVENCAMP SR FLD
 (N45°08.39'-W92°57.73')

WHISK
 ANOKA COUNTY-
 BLAINE
 (JANES FIELD)
 (N45°08.39'-W92°57.73')

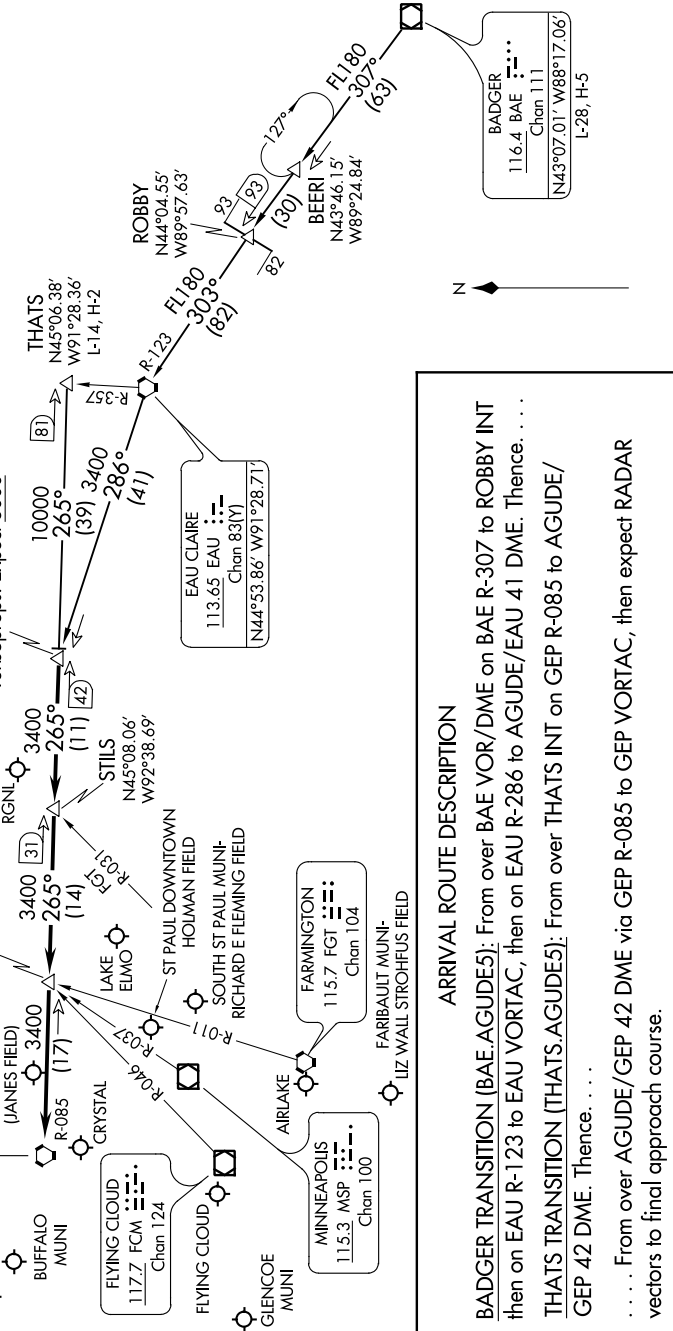
LO SIMENSTAD
 MUNI
 (N45°07.76'-W92°23.52')

THATS
 N45°06.38'
 W91°28.36'
 L-14, H-2

ROBBY
 N44°04.55'
 W89°57.63'

BEERI
 N43°46.15'
 W89°24.84'

BADGER
 116.4 BAE
 Chan 111
 (N43°07.01'-W88°17.06')
 L-28, H-5



ARRIVAL ROUTE DESCRIPTION

BADGER TRANSITION (BAE.AGUDE5): From over BAE VOR/DME on BAE R-307 to ROBBY INT then on EAU R-123 to EAU VORTAC, then on EAU R-286 to AGUDE/EAU 41 DME. Thence. . . .

THATS TRANSITION (THATS.AGUDE5): From over THATS INT on GEP R-085 to AGUDE/ GEP 42 DME. Thence. . . .

. . . . From over AGUDE/GEP 42 DME via GEP R-085 to GEP VORTAC, then expect RADAR vectors to final approach course.

AGUDE FIVE ARRIVAL

NC-1, 25 FEB 2021 to 25 MAR 2021