

RNAV (GPS) RWY 14

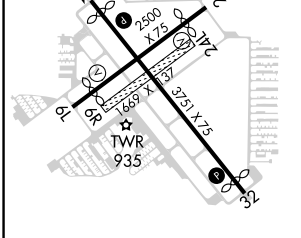
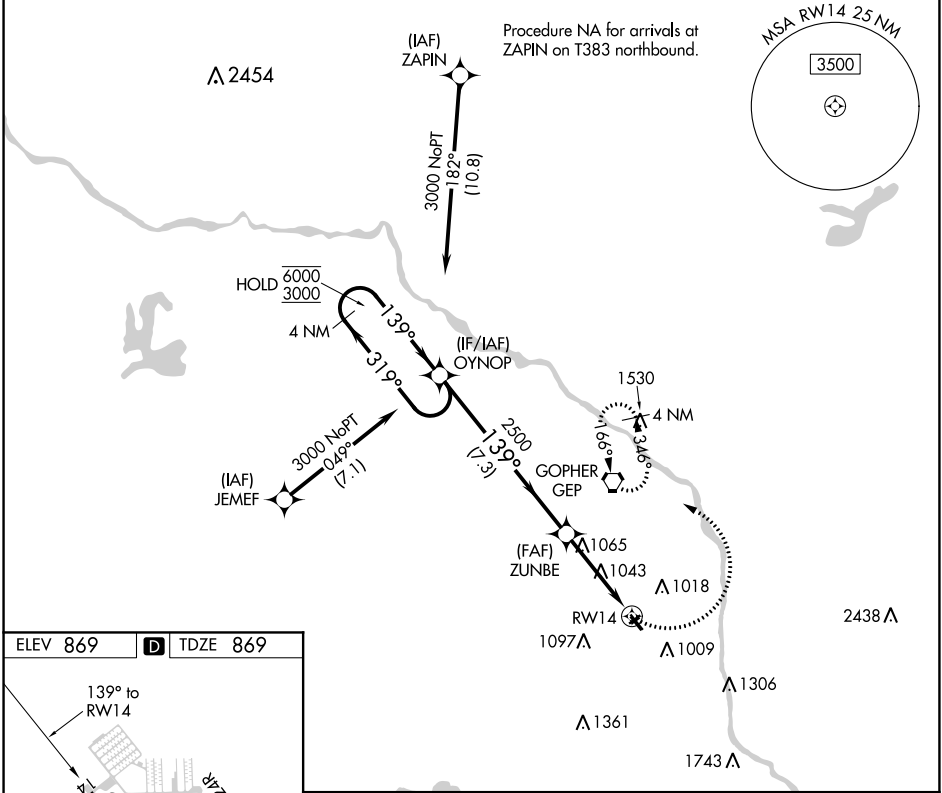
CRYSTAL (MIC)

APP CRS 139°	Rwy Idg TDZE Apt Elev	3508 869 869
------------------------	-----------------------------	---

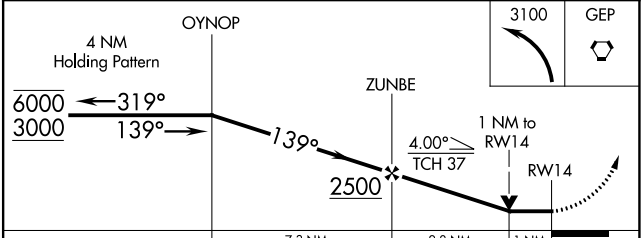
RNP APCH.
 ⚠ Circling NA to Rwy 6R and 24L.
 ⚠ Rwy 14 helicopter visibility reduction below 3/4 SM NA.

MISSED APPROACH: Climbing left turn to 3100 direct GEP VORTAC and hold, continue climb-in-hold to 3100.

ATIS 124.475	MINNEAPOLIS APP CON 126.5 335.65	CRYSTAL TOWER ★ 120.7 (CTAF) 0	GND CON 121.6	CLNC DEL 121.6	CLNC DEL 121.6 (When twr closed)	UNICOM 122.95
------------------------	--	--	-------------------------	--------------------------	---	-------------------------



ELEV 869	D TDZE 869
REIL Rwy 14 and 32 0	
MIRL Rwy 6L-24R and 14-32 0	



CATEGORY	A	B	C	D
LNAV MDA	1320-1	451 (500-1)	NA	
C CIRCLING	1340-1 471 (500-1)	1360-1 491 (500-1)	NA	

NC-1, 25 FEB 2021 to 25 MAR 2021

NC-1, 25 FEB 2021 to 25 MAR 2021