

WAAS CH 78328 W11A	APP CRS 107°	Rwy Idg TDZE Apt Elev	4713 408 408
--	------------------------	-----------------------------	---

RNAV (GPS) RWY 11

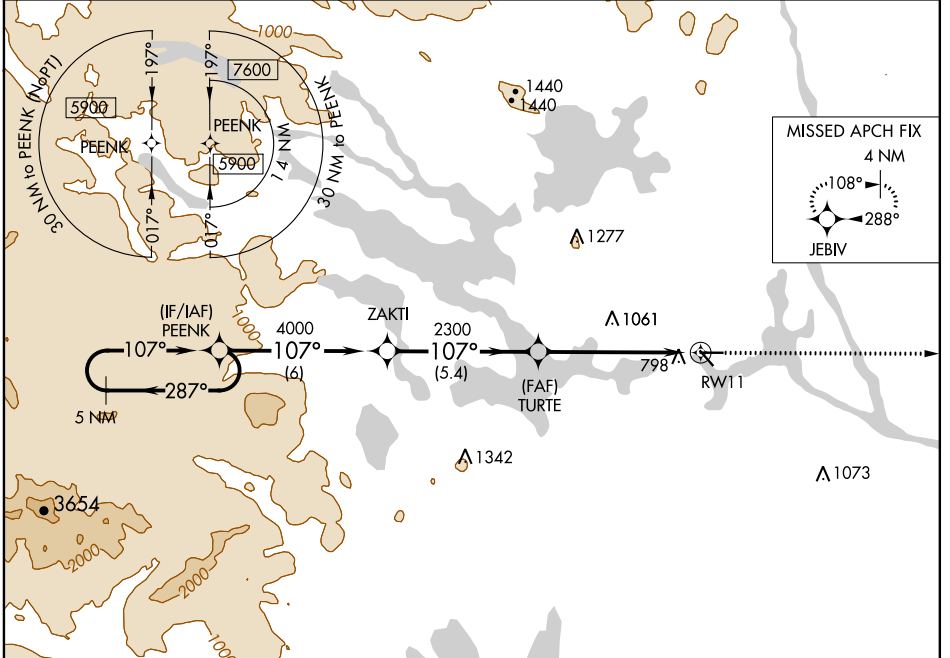
MILLINOCKET MUNI (MLT)

RNP APCH.

⚠ Baro-VNAV NA when using Houlton altimeter setting. For uncompensated Baro-VNAV systems, LNAV/VNAV NA below -15°C or above 41°C. Rwy 11 helicopter visibility reduction below 1 SM NA. When local altimeter setting not received, use Houlton altimeter setting and increase all DA and MDA 120 feet; increase LPV and LNAV/VNAV visibility all Cats ½ SM and LNAV visibility Cat B ¾ SM and Cat C/D ½ SM. Procedure NA at night.

⚠ MISSED APPROACH: Climb to 2300 direct JEBIV and hold.

ASOS 135.225	BOSTON CENTER 120.25 346.4	UNICOM 122.8 (CTAF)
------------------------	--------------------------------------	-------------------------------



NE-1, 25 FEB 2021 to 25 MAR 2021

NE-1, 25 FEB 2021 to 25 MAR 2021

ELEV 408		TDZE 408	
5 NM Holding Pattern		2300 JEBIV	
5900 ← 287°		↑	
107° →		⬠	
GP 3.00° TCH 51			
6 NM		5.4 NM	
4000		2300	
ZAKTI		TURTE	
107°		RWY 11	
2300			
6 NM		5.8 NM	
CATEGORY	A	B	C
LPV DA	929-1¾ 521 (600-1¾)		
LNAV/VNAV DA	1004-2 596 (600-2)		
LNAV MDA	1100-1 692 (700-1)	1100-2 692 (700-2)	
REIL Rwy 29 ⓪ MIRL Rwy 11-29 ⓪			