

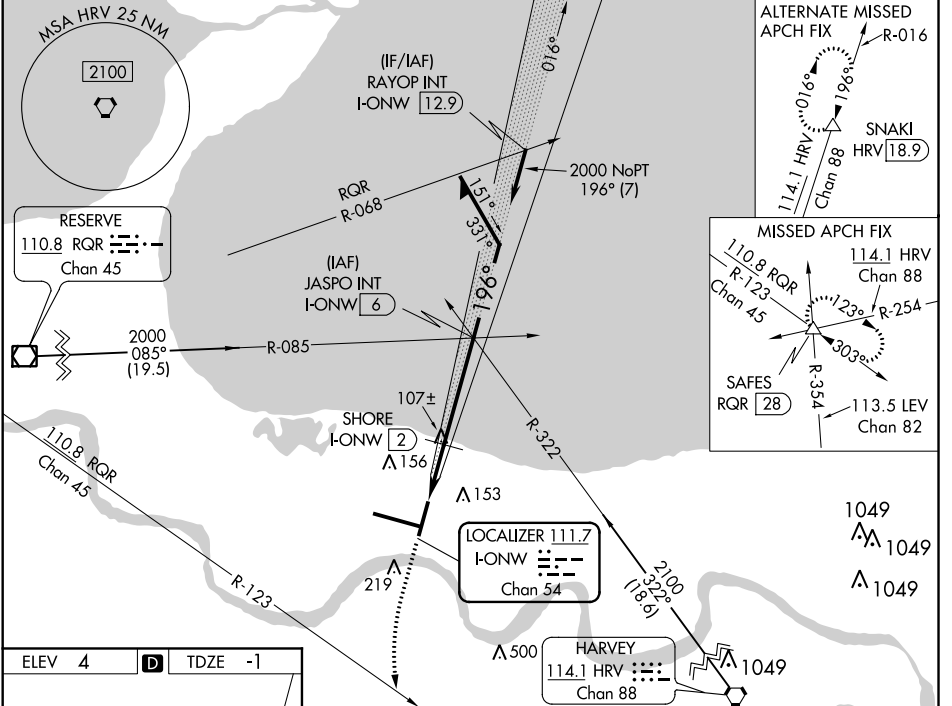
LOC/DME I-ONW 111.7 Chan 54	APP CRS 196°	Rwy Idg 7001 TDZE -1 Apt Elev 4
---	------------------------	--

LOC RWY 20

LOUIS ARMSTRONG NEW ORLEANS INTL (MSY)

MALS (A4) MISSED APPROACH: Climb to 1300 then climbing left turn to 2000 on heading 180° and RQR VOR/DME R-123 to SAFES INT/RQR 28 DME and hold.

D-ATIS 127.55	NEW ORLEANS APP CON WEST 125.5 350.35 EAST 133.15 290.3	NEW ORLEANS TOWER 119.5 254.3	GND CON 121.9 273.525	CLNC DEL 126.575	CPDLC
-------------------------	---	---	---------------------------------	----------------------------	-------



ELEV 4	D	TDZE -1
--------	----------	---------

196° 6.1 NM from FAF

RLLS Rwy 2
TDZ/CL Rwy 11
HIRL All Runways

FAF to MAP 6.1 NM

Knots	60	90	120	150	180
Min:Sec	6:06	4:04	3:03	2:26	2:02

1300	2000	hdg 180°	RQR R-123	SAFES △	JASPO INT I-ONW 6	Remain within 10 NM
I-ONW DME ANTENNA I-ONW 0.2		SHORE I-ONW 0.8		I-ONW 2		
I-ONW 0.2		I-ONW 0.8		I-ONW 2		
1 NM		1.2 NM		4 NM		
CATEGORY	A	B	C	D		
S-20	700/40	701 (700-¾)	700-1¾	701 (700-1¾)		
C CIRCLING	700-1	696 (700-1)	700-2 696 (700-2)	700-2¼ 696 (700-2¼)		
SHORE FIX MINIMUMS						
S-20	360/40		361 (400-¾)			
C CIRCLING	520-1	516 (600-1)	580-1½ 576 (600-1½)	600-2 596 (600-2)		

SC-4, 25 FEB 2021 to 25 MAR 2021

SC-4, 25 FEB 2021 to 25 MAR 2021