

WAAS CH 49220 W02A	APP CRS 016°	Rwy Idg 7001 TDZE 2 Apt Elev 4
--	------------------------	---

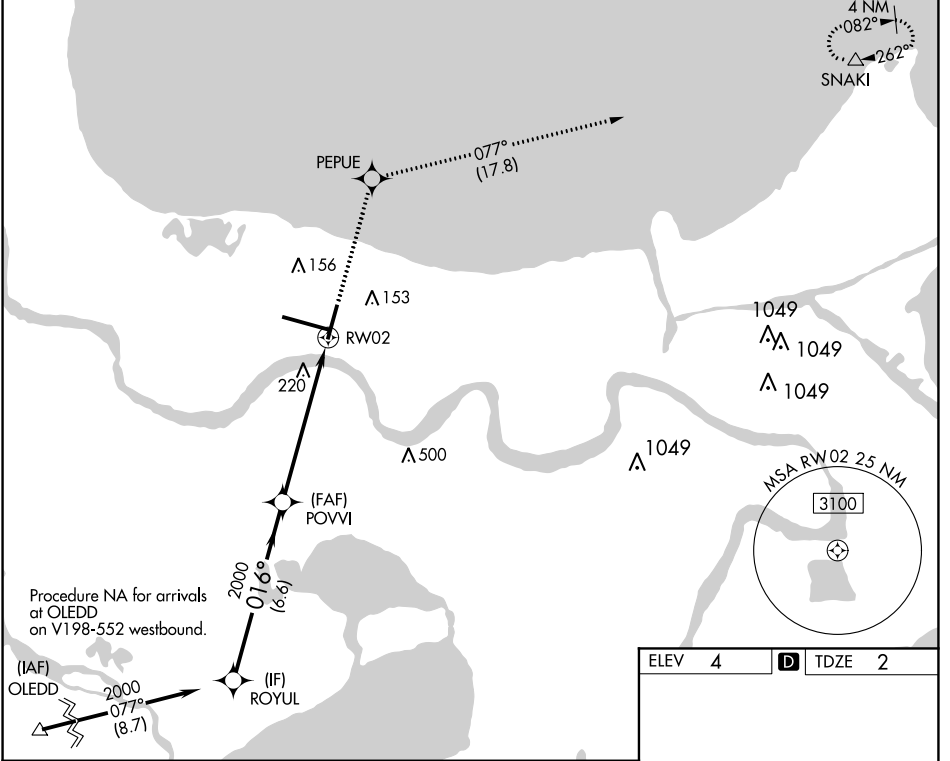
RNAV (GPS) RWY 2

LOUIS ARMSTRONG NEW ORLEANS INTL (MSY)

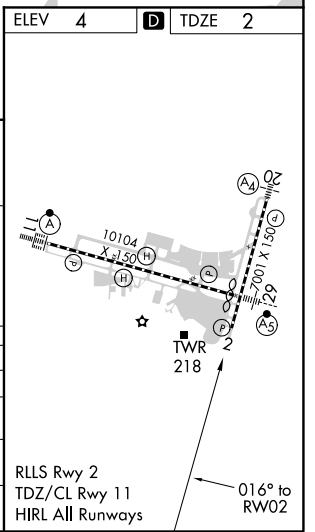
▼ For uncompensated Baro-VNAV systems, LNAV/VNAV NA below -1°C (31°F) or above 54°C (130°F). DME/DME RNP-0.3 NA. Helicopter visibility reduction below RVR 4000 NA.

MISSED APPROACH: Climb to 3000 direct PEPUE and on track 077° to SNAKI and hold.

D-ATIS 127.55	NEW ORLEANS APP CON WEST 125.5 350.35 EAST 133.15 290.3	NEW ORLEANS TOWER 119.5 254.3	GND CON 121.9 273.525	CLNC DEL 126.575	CPDLC
-------------------------	---	---	---------------------------------	----------------------------	-------



ROYUL	POVVI	3000	PEPUE	tr 077°	SNAKI
2000	2000	3000	3000		
GP 3.00° TCH 52		*1.3 NM to RW02			
6.6 NM		4.8 NM		1.3 NM	



CATEGORY	A	B	C	D
LPV DA		398-1¼	396 (400-1¼)	
LNAV/VNAV DA		379-1¼	377 (400-1¼)	
LNAV MDA	480/55	478 (500-1)	480-1⅜	478 (500-1⅜)
C CIRCLING	520-1	516 (600-1)	580-1½	600-2
			576 (600-½)	596 (600-2)

SC-4, 25 FEB 2021 to 25 MAR 2021

SC-4, 25 FEB 2021 to 25 MAR 2021