

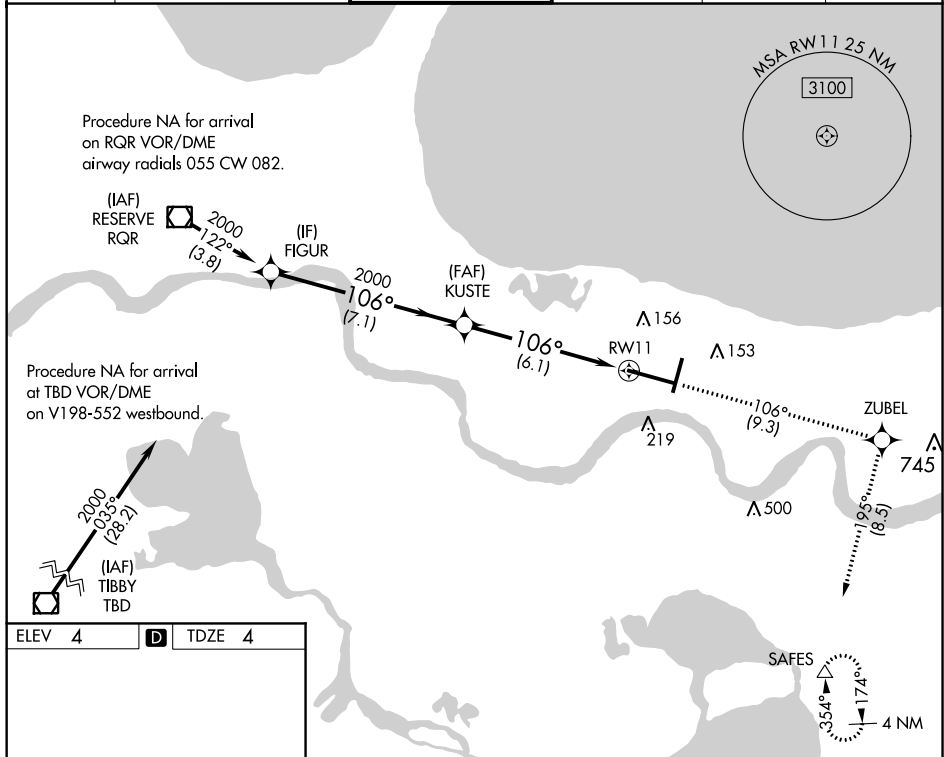
APP CRS <b>106°</b>	Rwy Idg <b>9800</b>
	TDZE <b>4</b>
	Apt Elev <b>4</b>

# RNAV (RNP) Z RWY 11

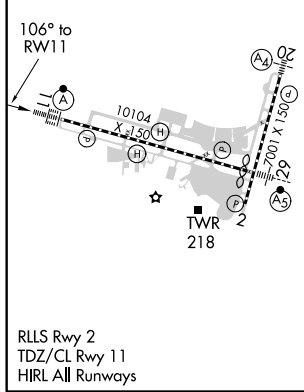
LOUIS ARMSTRONG NEW ORLEANS INTL (MSY)

<p>For uncompensated Baro-VNAV systems, procedure NA below -1°C (31°F) or above 54°C (130°F). GPS required. For inop ALSF-2, increase RNP 0.30 all Cats visibility to RVR 6000.</p>	<p>ALSF-2</p>	<p>MISSED APPROACH: Climb to 2000 on track 106° to ZUBEL and on track 195° to SAFES and hold.</p>
	<p>Procedure NA for arrival on RQR VOR/DME airway radials 055 CW 082.</p>	

D-ATIS <b>127.55</b>	NEW ORLEANS APP CON WEST <b>125.5 350.35</b> EAST <b>133.15 290.3</b>	NEW ORLEANS TOWER <b>119.5 254.3</b>	GND CON <b>121.9 273.525</b>	CLNC DEL <b>126.575</b>	CPDLC
-------------------------	---	---	---------------------------------	----------------------------	-------



ELEV 4	<b>D</b>	TDZE 4
--------	----------	--------



	2000	tr 106°	ZUBEL	tr 195°	SAFES
FIGUR	2000				
	2000	106°			
					RW11
GP 3.00° TCH 55	7.1 NM		6.1 NM		
CATEGORY	A	B	C	D	
RNP 0.14 DA		304/24	300 (300-½)		
RNP 0.30 DA		367/40	363 (400-¾)		
<b>AUTHORIZATION REQUIRED</b>					

SC-4, 25 FEB 2021 to 25 MAR 2021

SC-4, 25 FEB 2021 to 25 MAR 2021