

WAAS CH <b>40007</b> <b>W20A</b>	APP CRS <b>197°</b>	Rwy Idg <b>7001</b> TDZE <b>-1</b> Apt Elev <b>4</b>
--	------------------------	--

# RNAV (GPS) Y RWY 20

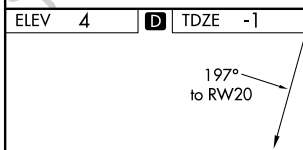
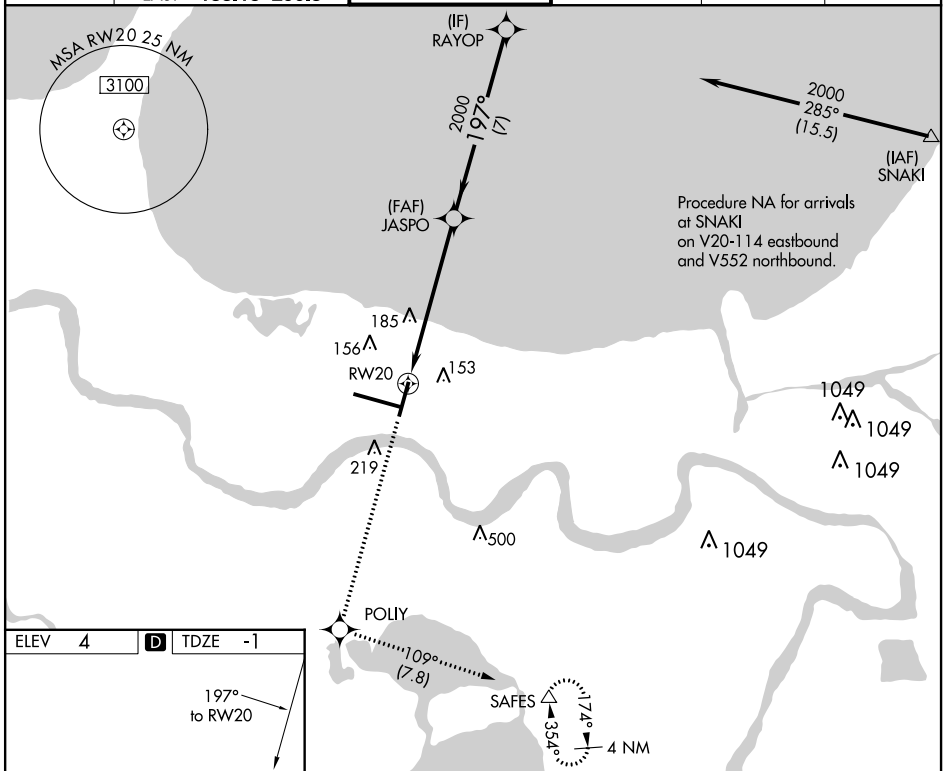
LOUIS ARMSTRONG NEW ORLEANS INTL (MSY)

▼ For uncompensated Baro-VNAV systems, LNAV/VNAV NA below -1°C (31°F) or above 54°C (130°F). DME/DME RNP-0.3 NA. Helicopter visibility reduction below RVR 4000 NA. For inop MALS, increase LNAV/VNAV Cat D visibility to RVR 5000; increase LNAV Cat C/D visibility to 1 $\frac{3}{8}$  mile.



MALS  
MISSED APPROACH:  
Climb to 2000 direct  
POLLY and on track 109°  
to SAFES and hold.

D-ATIS <b>127.55</b>	NEW ORLEANS APP CON WEST <b>125.5 350.35</b> EAST <b>133.15 290.3</b>	NEW ORLEANS TOWER <b>119.5 254.3</b>	GND CON <b>121.9 273.525</b>	CLNC DEL <b>126.575</b>	CPDLC
-------------------------	---	---	---------------------------------	----------------------------	-------



2000	POLLY	tr 109°	SAFES	JASPO	RAYOP
↑	◆	↔	△	2000	2000
*LNAV only.		*1.3 NM to RWY 20		GP 3.00° TCH 52	
1.3 NM		4.8 NM		7 NM	

CATEGORY	A	B	C	D
LPV DA		249/40	250 (300- $\frac{3}{4}$ )	
LNAV/VNAV DA		325/40	326 (400- $\frac{3}{4}$ )	
LNAV MDA	460/40	461 (500- $\frac{3}{4}$ )	460/55	461 (500-1)
<b>C</b> CIRCLING	520-1	516 (600-1)	580-1 $\frac{1}{2}$ 576 (600-1 $\frac{1}{2}$ )	600-2 596 (600-2)

SC-4, 25 FEB 2021 to 25 MAR 2021

SC-4, 25 FEB 2021 to 25 MAR 2021