

SAN DIEGO, CALIFORNIA

AL-5401 (FAA)

20030

RNAV (GPS) RWY 28R

MONTGOMERY-GIBBS EXECUTIVE (M.Y.F.)

WAAS CH 45710 W28A	APP CRS 281°	Rwy Idg TDZE 423 Apt Elev 427	3399
--	------------------------	---	-------------

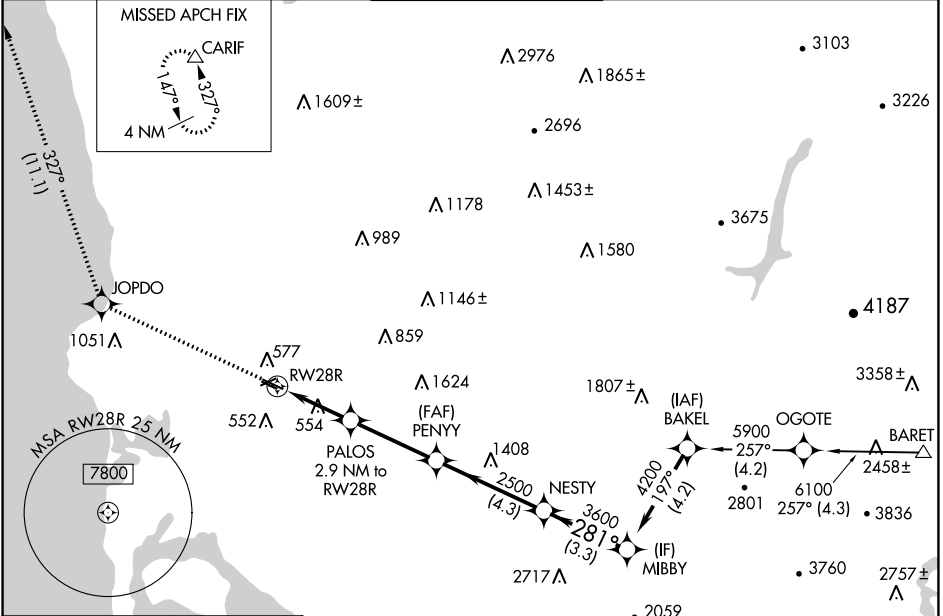
RNP APCH.

▼ Rwy 28R helicopter visibility reduction below 3/4 SM NA.
▲ For uncompensated Baro-VNAV systems, LNAV/VNAV NA below -15°C or above 54°C.



MISSED APPROACH: Climb to 3000 direct JOPDO and on track 327° to CARIF and hold.

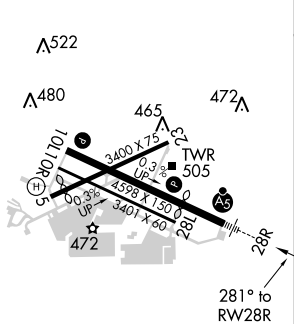
ATIS 126.9	SOCAL APP CON 124.35 279.625	MONTGOMERY TOWER ★ 119.2 (CTAF) 0 269.4	GND CON 118.225	CLNC DEL 123.725
----------------------	--	---	---------------------------	----------------------------



SW-3, 25 FEB 2021 to 25 MAR 2021

SW-3, 25 FEB 2021 to 25 MAR 2021

ELEV 427	TDZE 423
-----------------	-----------------



	3000	JOPDO	CARIF					
	↑	✧	tr 327°	△				
	*LNAV only							
		PALOS 2.9 NM to RWY28R	PENNY 2500	NESTY	MIBBY	4200		
		* 1.2 NM to RWY28R		3600		281°	GP 3.00°	TCH 41
		RWY28R	1380*	2500				
		1.2 NM	1.7 NM	3.4 NM	4.3 NM	3.3 NM		
CATEGORY	A	B	C	D				
LPV DA	673-3/4	250 (300-3/4)					NA	
LNAV/VNAV DA	750-3/4	327 (400-3/4)					NA	
LNAV MDA	840-3/4	417 (500-3/4)					NA	
CIRCLING	920-1	493 (500-1)					NA	

SAN DIEGO, CALIFORNIA
 Amdt 1C 28FEB19

32°49'N-117°08'W

MONTGOMERY-GIBBS EXECUTIVE (M.Y.F.) RNAV (GPS) RWY 28R