

NEW ORLEANS, LOUISIANA

RNAV (GPS) RWY 32

AL-630 (USN)

NEW ORLEANS NAS JRB (ALVIN CALLENDER FLD) (KNBG)

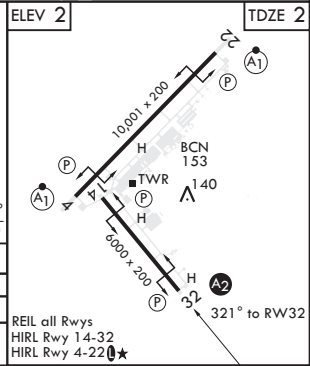
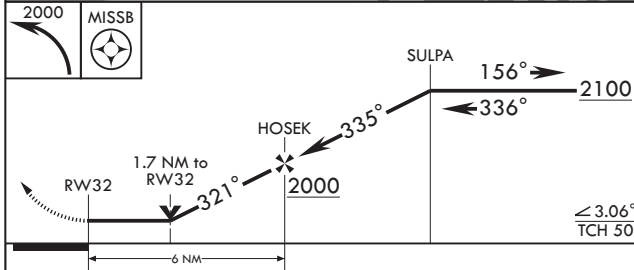
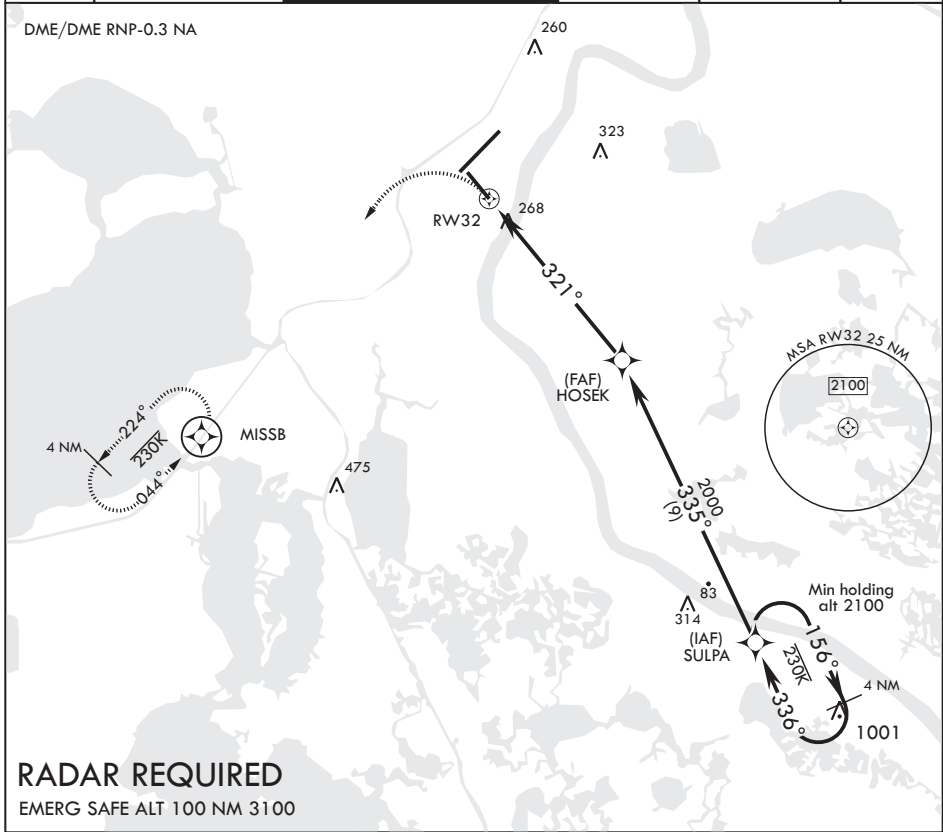
APCH CRS	Rwy Idg	6000
321°	TDZE	2
	Arpt Elev	2

V * When ALS inop, increase CAT CD vis to 1 5/8 miles.



MISSED APPROACH: Climbing left turn to 2000 direct MISSB and hold, do not exceed 250 KIAS until turn completion.

ATIS*	APP CON/DEP CON	NAVY NEW ORLEANS TOWER*	GND CON	CLNC DEL	ASR/PAR
279.55	123.85 256.9	123.8 0 * 340.2 (CTAF)	121.6 270.35	128.35 263.0	



CATEGORY	A	B	C	D
LNAV MDA*	580-1	578 (600-1)	580-1 5/8 578 (600-1 3/8)	
C CIRCLING	580-1	578 (600-1)	580-1 5/8 578 (600-1)	640-2 638 (700-2)

REIL all Rwy's
HIRL Rwy 14-32
HIRL Rwy 4-22 **0***

NEW ORLEANS, LOUISIANA

29°50'N - 90°02'W NEW ORLEANS NAS JRB (ALVIN CALLENDER FLD) (KNBG)

Amdt 2 15AUG19

RNAV (GPS) RWY 32

SC-4, 25 FEB 2021 to 25 MAR 2021

SC-4, 25 FEB 2021 to 25 MAR 2021